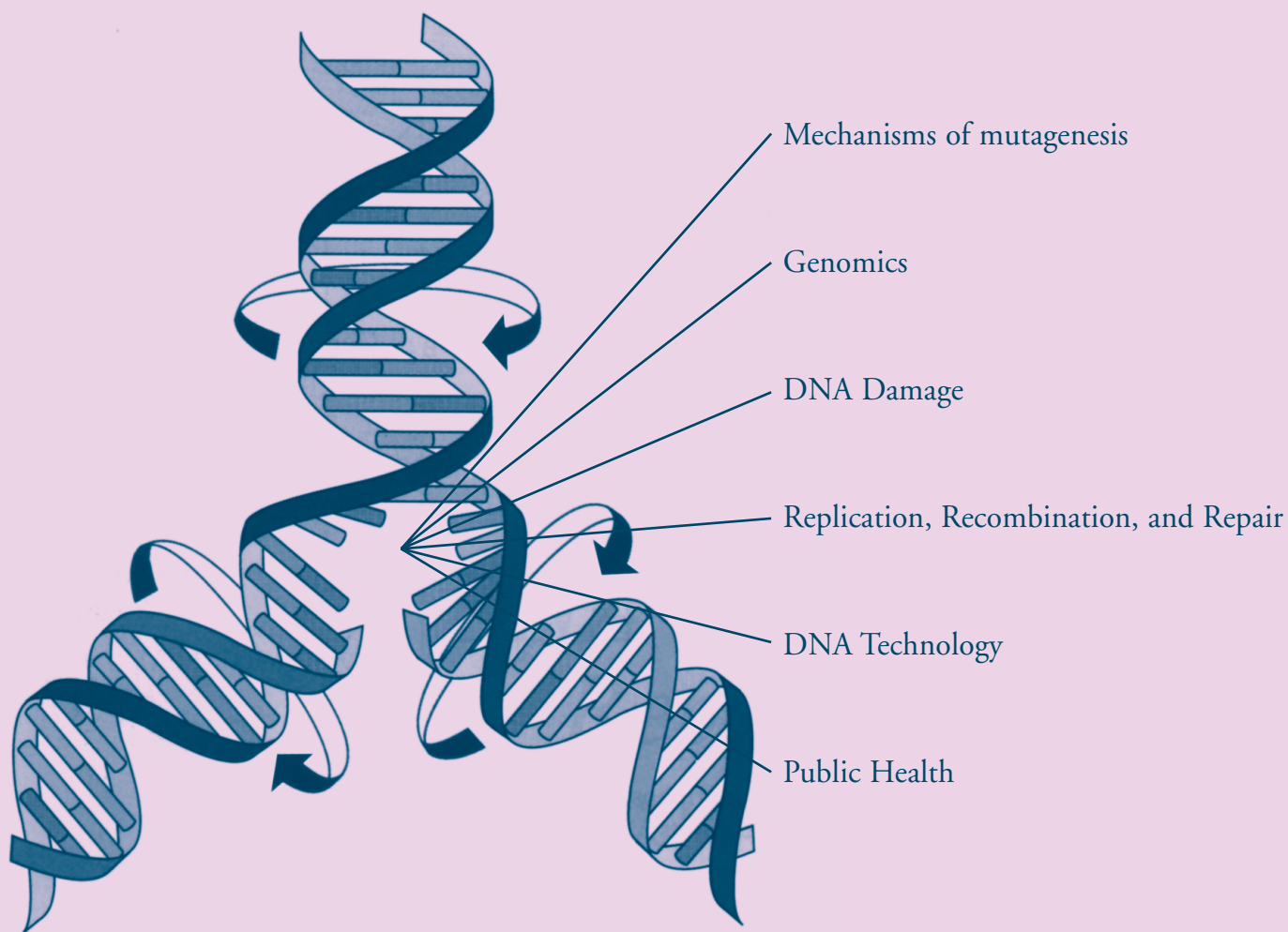


An International Journal Specializing in  
Environmental Mutagenesis

View this journal online at [wileyonlinelibrary.com](http://wileyonlinelibrary.com)

Volume 56  
Number 5  
June 2015

# Environmental and Molecular Mutagenesis



In this issue: James R. Lupski, winner of the 2014 EMGS Award, reviews the remarkable contribution of DNA structural variation to human genome evolution and disease, and the new concept of genomic disorders.

**WILEY** Blackwell

ISSN: 0893-6692



Environmental  
Mutagenesis and  
Genomics Society

Discover this journal online at  
**Wiley Online Library**  
[wileyonlinelibrary.com](http://wileyonlinelibrary.com)

## Review Article

# Structural Variation Mutagenesis of the Human Genome: Impact on Disease and Evolution

James R. Lupski\*

Department of Molecular and Human Genetics, Baylor College of Medicine,  
One Baylor Plaza Room 604B, Houston, Texas

Watson-Crick base-pair changes, or single-nucleotide variants (SNV), have long been known as a source of mutations. However, the extent to which DNA structural variation, including duplication and deletion copy number variants (CNV) and copy number neutral inversions and translocations, contribute to human genome variation and disease has been appreciated only recently. Moreover, the potential complexity of structural variants (SV) was not envisioned; thus, the frequency of complex genomic rearrangements and how such events form remained a mystery. The concept of genomic

disorders, diseases due to genomic rearrangements and not sequence-based changes for which genomic architecture incite genomic instability, delineated a new category of conditions distinct from chromosomal syndromes and single-gene Mendelian diseases. Nevertheless, it is the mechanistic understanding of CNV/SV formation that has promoted further understanding of human biology and disease and provided insights into human genome and gene evolution. *Environ. Mol. Mutagen.* 56:419–436, 2015. © 2015 Wiley Periodicals, Inc.

**Key words:** structural variant; copy number variant; recombination; DNA replication; chromosome biology



### 2014 EMGS AWARD

The Environmental Mutagenesis and Genomics Society conferred this award to Dr. James R. Lupski for his seminal contributions that have significantly increased our understanding of mutational mechanisms and human disease.

These contributions span basic DNA chemistry to ground-breaking applications of genomic technologies. Dr. Lupski's most recent studies focus on genomic instability and rearrangements, disease-related mutations and copy number variants (CNVs), and the technological advances in whole genome and exome sequence analysis of Mendelian disease. His contributions to elucidating mechanisms that cause human mutations, as well linking those mutations to diseases, are unparalleled. His research has led him to develop the concept of genomic disorders, which refers to syndromes that originate not from point mutations that affect the function of specific genes, but from duplications and deletions of genomic regions.

### GENOME VARIATION IN EVOLUTION AND DISEASE

Structural variation (SV) refers to rearrangements of the DNA in a genome resulting in novel breakpoint junctional events. It can be copy number neutral (e.g., inversion or balanced translocation) or in a diploid genome result in copy number variants (CNV) at a given locus due to deletion, duplication, triplication, or further multiplication of one copy of a genomic segment on one chromosome of a homologous pair. The size can vary from as small as the size of an average exon (~100–200 bp) to as large as up to millions of base pairs (megabase or Mb) of DNA; the latter can be visible by microscopic techniques such as G-banded

This paper was presented at 2014 Environmental Mutagenesis & Genomics Society Award presentation in Orlando, Florida.

Grant sponsor: NINDS; Grant number: R01NS058529.

Grant sponsor: NHGRI; Grant number: U54HG006542.

\*Correspondence to: James R. Lupski, Department of Molecular and Human Genetics, Baylor College of Medicine, One Baylor Plaza Room 604B, Houston, TX 77030, USA. E-mail: jlupski@bcm.edu

Received 29 January 2015; and in final form 1 February 2015

DOI 10.1002/em.21943

Published online 17 April 2015 in  
Wiley Online Library (wileyonlinelibrary.com).

**TABLE I. Structural Variation and Environmental Mutagenesis**Observations:

- 1) CNV important for disease (genomic disorders) and evolution.
- 2) CNV *de novo* mutation rates >>> SNV (single nucleotide variant).

Questions:

- 1) Do current mutagenesis assays (e.g., Ames test) measure CNV formation?
- 2) Can we design such an assay?
- 3) Are we introducing compounds into our environment that induce CNV mutagenesis?
- 4) What is the evolutionary “rheostat”—SNV or CNV?

human chromosome analysis when >5–10 Mb in size. SV and CNV require a break in the phosphodiester backbone of the DNA and the formation of a novel joining thus generating a novel “joining point” from discontinuous DNA sequences in the human reference haploid genome or a unique breakpoint junction.

Imagining our genomes as an encyclopedic book of life, analogized by 23 volumes with two copies each representing the 23 chromosome pairs, then whereas Watson-Crick base pair changes, or single nucleotide variants (SNVs), could be represented as typographical errors in letters of the alphabet, CNV would be represented by deletions of entire sentences, paragraphs, pages, or even large parts of an entire volume. CNV are ubiquitous in the human genome and account for more total differences between any two personal genomes, in terms of bases involved, than all the SNV combined [Conrad et al., 2010]. CNV have been associated with both Mendelian traits and common complex disease [Stankiewicz and Lupski, 2010] and have played a major role in the evolution of genes and genomes [Carvalho et al., 2010]. However, a potential role for SV and CNV in environmentally mediated mutagenesis is only beginning to unfold (Table I).

**GENE DOSAGE AND CNV**

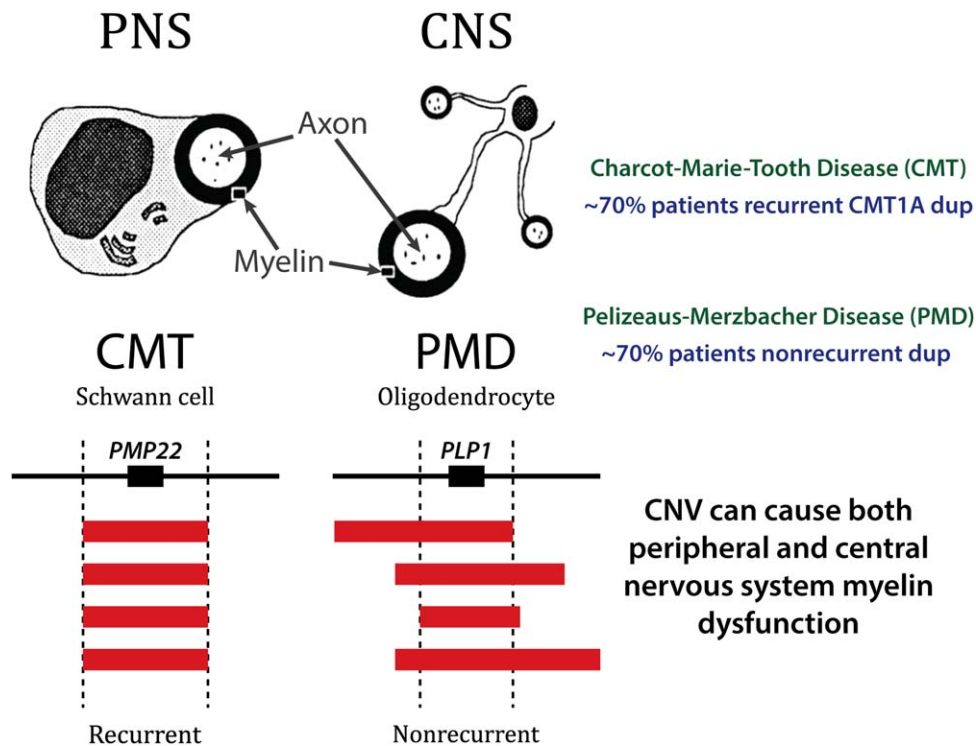
If one retrospectively reviews the scientific literature and examines where for the first time the concept of gene dosage was appreciated and experimentally demonstrated perhaps this is best found in the work of Albert Blakeslee and colleagues at the Cold Spring Harbor Laboratory [Blakeslee, 1922]. Blakeslee showed in the jimson weed *Datura stramonium* that the observed plant phenotype was directly related to trisomy for each of the individual twelve chromosomes in this organism’s karyotype. Thus, phenotypic variation in *Datura* was due to changes in chromosome copy number—defining trisomy as one extra copy of an individual chromosome.

Perhaps the first direct observation of SV of the genome in association with trait manifestation was reported by Bridges [1936]. He showed that duplication of a locus in *Drosophila melanogaster* was responsible

for the *Bar* phenotype which consisted of a narrower slit eye in the fruit fly. If the duplication was reverted, the fly eye would return to the normal rounded shape. Moreover, rarely he could identify an *ultraBar* phenotype with a more narrowly slit eye and this was associated with a triplication at the *Bar* locus—“... it was found that the extra section observed in *Bar* was present still again, giving a thrice-repeated seriation in direct sequence.” Thus, these studies by Blakeslee and Bridges demonstrate the concept of gene dosage being related to trait manifestation and crystalized the idea that CNV (i.e., duplication or triplication of a locus) in a diploid genome could represent mutational events important to phenotypic manifestations. Calvin Bridges argued that: “the respective shares attributable in the total effect to the genic balance change (i.e., gene dosage) and to the position-effect change seem to be at present a matter of taste.” Nevertheless, at the time it seems the “fly group” was more enamored by position effects. Subsequent work in the fruitfly examining systematically both deletion (deficiencies) and duplication CNV constructed from translocation bearing strains concluded that: “... very few of the loci of *Drosophila melanogaster* can produce a dominant phenotype owing to dosage change” [Lindsley et al., 1972].

With the advent of molecular biology and genetic engineering tools, including recombinant DNA, Southern blotting, and later the polymerase chain reaction (PCR), and molecular cytogenetics techniques such as fluorescence *in situ* hybridization or FISH, human genetics, and molecular approaches led to some of the first elucidation of genic scale rearrangements in association with human disease. At the  $\beta$ -thalassemia locus, it was noted that a mild phenotype could result from duplication of the  $\alpha$ -globin gene [Higgs et al., 1980]. Furthermore, the cloning of the opsin genes enabled the elucidation of the molecular genetic basis of red-green color blindness that in some individuals was associated with a rearrangement of these genes [Nathans et al., 1986]. Finally, even such common traits as hypertension were found to result in some families from a genomic rearrangement between the closely related genes encoding aldosterone synthase and 11  $\beta$ -hydroxylase with the rearrangement fusing a different regulatory region resulting in mis-expression of a specific gene and causing glucocorticoid-remedial aldosteronism [Lifton et al., 1992]. Nevertheless, in each of these cases, the rearrangement occurred between closely related genes and thus, one could have envisioned interruption of the gene or disruption of the nearby regulatory region that contributed to trait manifestation.

One of the first gene dosage alterations in the human genome to be experimentally related to a clinical phenotype was an apparent increased copy number of the *APP* gene in association with an early-onset Alzheimer disease [Delabar et al., 1987]. In this study, quantitative Southern blotting was used to determine gene dosage and it was



**Fig. 1.** Genomic observations regarding disorders of myelin Charcot-Marie-Tooth (CMT) disease and Pelizeaus-Merzbacher (PMD) disease are well described disorders of the myelin present in either the peripheral nervous system (PNS) or central nervous system (CNS), respectively. Myelin is synthesized by supporting glial cells and wraps around the axons of neurons. Specialized supporting glial cells include the Schwann cell and oligodendrocyte (above left) in the PNS and CNS, respectively.

Horizontal black line represent genomic intervals on chromosomes 17p12 and Xq22.2 for CMT and PMD loci, respectively. Below, horizontal red bars signify genomic extent of gain of copy number due to duplication with exact map position of the smallest region of overlap (SRO) shown (dashed vertical lines). Note for CMT1A duplication the recurrent breakpoint junctions, whereas PMD associated breakpoint junctions differ for each patient or family (nonrecurrent events).

clearly demonstrated that the *APP* gene, which was mapped to chromosome 21, revealed increased *APP* gene dosage in the subject and it was comparable to that observed in genomic DNA from a patient with an abnormal 47, XY + 21 karyotype in association with a Down syndrome phenotype. These observed gene dosage abnormalities were distinct from the molecular findings seen in genomic DNA from control individuals with normal 46, XX, or 46, XY karyotypes. This was of particular interest given the known clinical association of Down syndrome with early onset dementia. Moreover, in children with Down syndrome by clinical examination yet normal karyotype (46, XX or 46, XY) a submicroscopic duplication of one chromosome 21 homolog was revealed by molecular analyses showing increased *APP* gene dosage. This increase in gene dosage was demonstrated by Southern blotting that showed dosage differences of heterozygous alleles consistent with duplication on one chromosome homolog and three genomic copies of *APP*. Controls of both normal individuals and late-onset Alzheimer disease individuals showed two copies of *APP*. Nevertheless, two reports then argued against the role of *APP* duplication in Alzheimer disease. Each of these latter “negative data” reports could not find evidence for

duplication in the brains of patients with Alzheimer disease; however, only less than 10 patients with sporadic late onset dementia were studied [Podlisny et al., 1987; Tanzi et al., 1987]. Interestingly, 20 years later *APP* locus duplication was clearly demonstrated to cause Alzheimer disease with cerebral amyloid angiopathy in five families of French descent with autosomal dominant early-onset Alzheimer disease [Rovelet-Lecrux et al., 2006]. Thus, gene dosage as a molecular mechanism for chromosomal syndromes, Mendelian disease, and even complex traits began to emerge during a 20 year interval through studies on *APP* copy number variation in association with Alzheimer dementia. During this time interval studies on myelin disorders resulting in neurological disease robustly documented duplication CNV and gene dosage as a cause for disease phenotype, elucidated the concept of genomic disorders [Lupski, 1998, 2009], and paved the way for understanding the mechanistic bases of CNV formation.

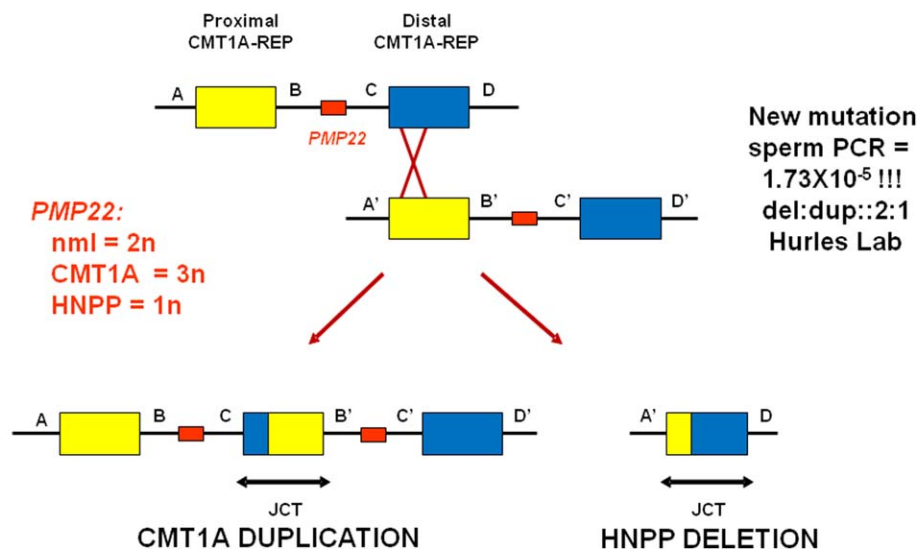
#### MYELIN DISEASES OF THE NERVOUS SYSTEM, CNV, AND GENOMIC DISORDERS

Two major mechanisms for CNV formation in the human genome, nonallelic homologous recombination (NAHR)



**Homologous Recombination  
of non-allelic loci = NAHR  
CrossOver hotspots elucidated**

**~ 70% of all CMT1 pts  
76-90% of sporadic CMT1  
[de novo mutation]**



**Fig. 2.** The CMT1A duplication—a CNV paradigm. Horizontal lines show map positions in the human genome with large rectangles depicting flanking proximal (yellow) and distal (blue) low copy repeats (LCR termed CM1A-REP) and the small rectangles showing the dosage sensitive *PMP22* gene (red). Upper case letters (A, B, etc.) depict unique DNA sequence with allelic copies from the two chromosome homologs in diploid cells designated (A', B'). The red X demarcates a crossover

with arrows (red single headed) showing products of homologous recombination (HR). The duplication CNV (CMT1A duplication) and deletion CNV (HNPP deletion) products generated in haploid germ cells (below) are shown with novel breakpoint junctions observed (double headed horizontal black arrows). Note only one chromosome shown; in diploid cell duplication will result in three copies of *PMP22*; the complexity of genetic arithmetic [Riccardi and Lupski, 2013].

and the replication-based mechanisms FoSTeS/ MMBIR (Fork Stalling Template Switching/Microhomology Mediated Break Induced Replication), were elucidated primarily through studies of disorders of myelin in the peripheral nervous system (Charcot-Marie-Tooth disease; CMT1A MIM#118220) or the central nervous system (Pelizaeus-Merzbacher disease; PMD, MIM#312080) where copy number gain (e.g., duplication) of a dosage sensitive gene (*PMP22* or *PLP1*, respectively) resulted in the disease (Fig. 1). Recognition of the disease trait enabled ascertainment of mutational events in the population. Thus, the initial key experimental observation was that for both myelin disorders the disease resulted from a duplication of a genomic segment rather than a coding variant within a gene. The other important experimental observations came from mapping the breakpoint junctions of the duplication CNVs. At the CMT locus the duplication was almost always the same size with apparently identical breakpoint junctions that “clustered” in the human genome documenting a recurrent mutational event [Lupski et al., 1991] (Fig. 1). Clustering of breakpoint junctions was also noted for a chromosomal microdeletion syndrome [Greenberg et al., 1991; Guzzetta et al., 1992] known as the Smith-Magenis syndrome (SMS, MIM#182290) potentially mechanistically linking chromosomal aberrations with DNA rearrangements. In contrast, the gains at the PMD locus were of all different sizes and

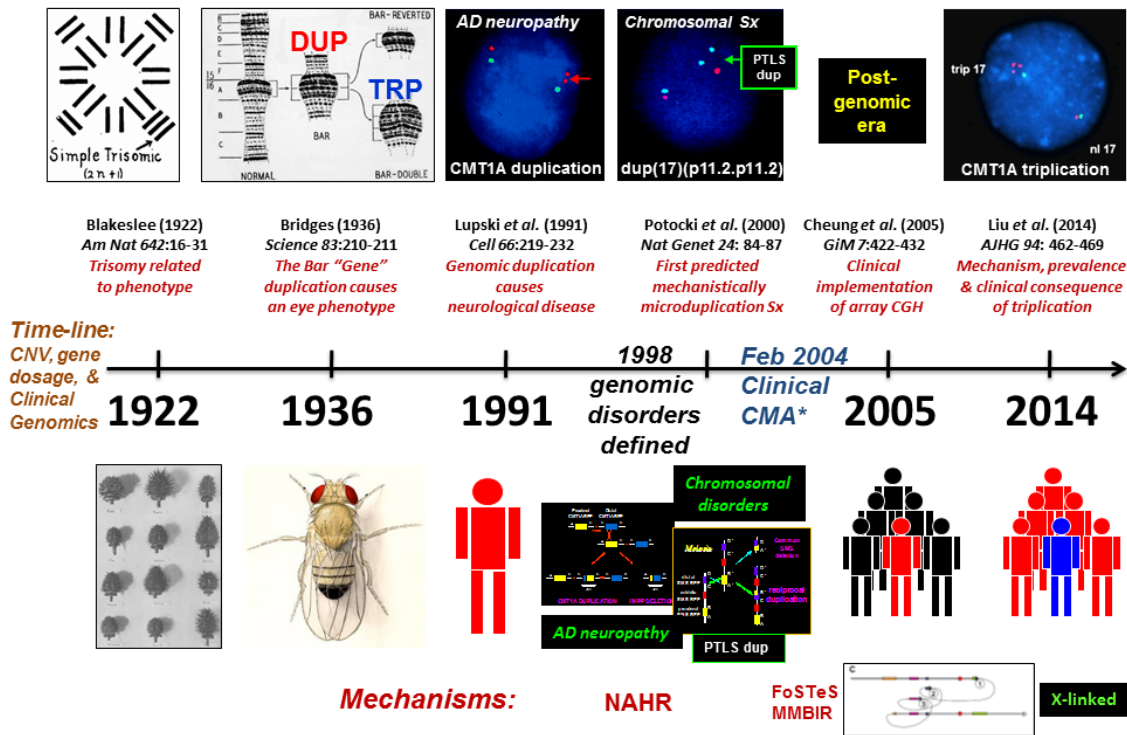
the breakpoint junction seemed distinct for each individual event; distinguished as nonrecurrent CNV [Inoue et al., 1999] (Fig. 1).

**MECHANISMS FOR CNV FORMATION**

The CMT1A duplication was independently identified in Antwerpen, Belgium, and Houston, Texas and has become a paradigm to study CNV [Lupski et al., 1991; Raeymaekers et al., 1991] (Fig. 2). The CMT1A duplication was shown to cause demyelinating CMT in about 70% of families and remarkably in 76–90% of sporadic demyelinating CMT, in the latter more frequently observed sporadic cases of the disease were caused by *de novo* mutation. The duplication conveyed the neuropathy trait by virtue of a gene dosage effect [Lupski et al., 1992].

The mechanism for generating the duplication CNV occurred through the misalignment of chromosomal loci at flanking low copy repeat (LCR) sequences and a subsequent homologous recombination between the nonallelic copies of these repeats from the two chromosomal homologs [Pentao et al., 1992] (Fig. 2). This so called “nonallelic homologous recombination” or NAHR [Stankiewicz and Lupski, 2002] also was one of the first mechanisms elucidated for a host of disorders referred to as

## Genomic disorders: a new medical genetics discipline



**Fig. 3.** Timeline for the emergence of the concepts of trait manifestations via gene dosage, structural variation (duplication and triplication CNV), genomic disorders, and for clinical genomics along the path to delineation of human genome structural variation mutagenesis, middle horizontal line (black) depicts dates for prominent milestones with key observations shown (above). Model organisms (plant and fruitfly) and pioneering organism (human) studied, and mechanisms delineated, are shown below.

genomic disorders [Lupski, 1998, 2009]. Interestingly, despite  $\sim 24$  kb of flanking  $\sim 99\%$  identical sequence the crossovers showed a positional preference, or recombination hotspots, that were defined molecularly [Reiter et al., 1996; Timmerman et al., 1997; Lupski, 2004]. The new mutation CMT1A duplication in male gametes was shown to occur at a frequency of  $1.7 \times 10^{-5}$  [Turner et al., 2008], and the frequency depended upon alleles at the *PRDM9* locus, which encodes a protein that facilitates homologous recombination (HR) by recognizing a *cis*-acting recombination hotspot motif [Berg et al., 2010]. The mechanism also predicted a reciprocal deletion subsequently found to be responsible for a different clinical entity known as hereditary neuropathy with liability to pressure palsies (HNPP) [Chance et al., 1993, 1994] (Fig. 2). Remarkably, in a recent study reporting genetic testing for disease associated variation in  $>17,000$  patients with neuropathy for whom physicians ordered CMT molecular testing the *PMP22* duplication or deletion CNV were responsible for about 80% of the molecular diagnoses [DiVencenzo et al., 2014].

The key gene dosage hypothesis was supported by a multitude of experimental evidence. Initial genetic studies

had documented an apparent more severe peripheral neuropathy phenotype in rare patients that were found to be homozygous for the CMT1A duplication [Lupski et al., 1991; Kaku et al., 1993]. Moreover, recent evidence identified the predicted CMT1A triplication and indeed that it also, as anticipated, conveyed a more severe phenotype [Liu et al., 2014a]. The recognition of *PMP22* as the key dosage sensitive gene was initially suggested by its mapping within the duplication/deletion interval (Fig. 2) and the identification of point mutations in CMT1A patients found to not have the CMT1A duplication [Roa et al., 1993]. This also was consistent with the idea that CMT1A duplications and some *PMP22* missense mutations behaved as gain-of-function mutations whereas HNPP deletion mediated its phenotypic consequences through haploinsufficiency behaving as a loss-of-function mutation; the latter supported by the identification of frameshift mutations of *PMP22* in nondeletion HNPP subjects [Nicholson et al., 1994].

For the SMS microdeletion syndrome, the breakpoints clustered in large LCRs of  $>200$  kb [Chen et al., 1997] and crossovers that occurred within the flanking repeats showed a positional preference consistent with a

recombination hotspot [Bi et al., 2003] similar to those seen at the CMT1A/HNPP locus [Reiter et al., 1996; Timmerman et al., 1997]. These observations mechanistically suggested that a reciprocal microduplication syndrome may exist. Indeed, three years later, the reciprocal duplication was described [Potocki et al., 2000] (Fig. 3) and the detailed clinical characteristics of the associated Potocki-Lupski (PTLS, MIM#610883) syndrome were elucidated seven years later [Potocki et al., 2007]. As the recognition of the NAHR mechanism was better appreciated many predicted reciprocal duplications to the well characterized microdeletion syndromes began to be discovered [Stankiewicz and Lupski, 2002; Lupski, 2009]. Moreover, novel genomic disorders were discovered by an approach pioneered by Sharp and Eichler that used the segmental duplication architecture of the human genome to predict regions susceptible to NAHR mediated genomic instability [Sharp et al., 2006].

The NAHR mechanism was clearly documented to be responsible for recurrent genomic rearrangements and chromosomal aberrations [Liu et al., 2012]. The recurrent genomic rearrangements use LCR (also called segmental duplications, SD) as substrates for NAHR [Dittwald et al., 2013a]. The mechanism can be responsible for deletions, duplications, inversions, as well as isochromosome formation through sister chromatid exchange utilizing inverted repeats as substrates [Barbouti et al., 2004]. Moreover, recurrent reciprocal translocations [t(8;12)(p23.1;p13.31), t(4;8)(p16.2;p23.1), t(4;11)(p16.2;p15.4)] [Ou et al., 2011] were documented to occur by NAHR [Liu et al., 2012].

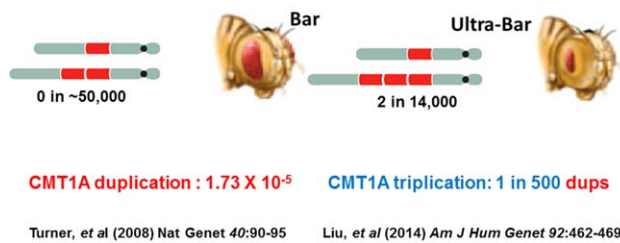
Further studies of NAHR at the SMS/PTLS 17p11.2 locus noted a correlation between the frequency with which the rearrangements occurred utilizing LCR substrate pairs and the length of those flanking LCRs [Liu et al., 2011c]. This led to the concept of ectopic synapsis as a mediator of an ectopic crossing over. Consistent with this hypothesis were the following: (i) the original observation of Calvin Bridges using polytene chromosomes and studies at the *Bar* locus wherein he showed that: "... synapses is disturbed" [Bridges, 1936], (ii) the observation that NAHR and AHR (allelic homologous recombination) hotspots coincide [Lindsay et al., 2006], (iii) the fact that the same PRDM9 hotspot motif is used for NAHR as for AHR [Zhang et al., 2010], and (iv) yeast synaptonemal complex mutants abolished ectopic homologous recombination or NAHR [Shinohara and Shinohara, 2013].

These locus-specific studies in humans were further complemented by computational analyses of patient-identified deletion and duplication CNV that occurred genomewide by NAHR as evidenced by recurrent and reciprocal events. Indeed, such *in silico* work supplemented by clinical laboratory studies on tens of thousands of patients demonstrated that there was a correlation between the NAHR *de novo* deletion frequency and the

length of the LCR as well as the fraction matching or percent sequence identity whereas an inverse correlation existed with the distance between LCR substrates. The frequency of observed deletion/duplication events was also associated with significantly increased NAHR hotspots and furthermore the hotspot frequency density for the PRDM9 recognition motif also appeared to correlate with frequency [Dittwald et al., 2013b]. The latter computational finding is consistent with observations regarding duplication and triplication at the STS locus, one of the most frequent loci to undergo reciprocal CNV events, where the AHR/NAHR hotspot motif is embedded within a repeat unit of a microsatellite, making this region the highest density of the hotspot motif within the entire human genome [Liu et al., 2011a].

While the study of recurrent rearrangement events elucidated the NAHR mechanism, molecular studies of non-recurrent rearrangements suggested a potentially different mechanism for CNV formation. Investigations of duplications at the *PLP1* locus found in association with PMD revealed that the *PLP1* duplications were of different sizes and encompassed distinct intervals of the human genome, but all those associated with disease contained the dosage-sensitive *PLP1* gene. Thus, the distinguishing characteristics of the PMD-associated *PLP1* duplication included its seemingly nonrecurrent nature, as well as the breakpoints occurring in different places of the human genome flanking the *PLP1* gene (Fig. 1). Furthermore, breakpoint junctions did not reveal a simple cutting and pasting of two DNA ends, but instead showed inserted segments of the genome in an apparent template driven manner, each apparently templated genomic interval separated by microhomology that was posited to potentially reflect priming of DNA replication. There was no recombination model that could explain these observations found at human CNV. Thus, a replicative mechanism for rearrangement was proposed that encompassed in the model microhomology to prime the replication and long distance template switches—FoSTeS or **Fork Stalling Template Switching** [Lee et al., 2007]. This latter mechanism was shown to cause CNV of all different sizes including potentially many megabases, both visible and submicroscopic chromosomal aberrations, as well as those of a size that encompassed only a single exon of a gene [Zhang et al., 2009].

The first observations of breakpoint junction sequences and recombination products suggesting long distance template switching after potential stalling of the replication fork (FoSTeS) were complemented by more detailed mechanistic modeling that included features embodied in the microhomology mediated break induced replication model (MMBIR) [Hastings et al., 2009]. The proposal was that a collapsed replication fork generated a single ended, double stranded DNA (seDNA) that was processed by extensive 5' exonuclease degradation to expose a



**Fig. 4.** CNV new mutations. The rates of formation of duplication versus triplication at the *Drosophila melanogaster* *Bar* locus and the CMT1A locus. Charles Zeleny documented that an *ultraBar* phenotype was observed in 2/14,000 fruit flies screened. He could not determine the frequency of *de novo* duplication, but observed no additional *de novo* duplications in association with a sporadic *Bar* trait in >46,000 flies studied. For CMT1A the *de novo* duplication was estimated to occur at  $1.7\text{--}2.6 \times 10^{-5}$  [Lupski, 2007] and shown by sperm assay to occur in the male germline at  $1.73 \times 10^{-5}$ . These observed frequencies were much greater, on a locus specific basis, versus those found for single nucleotide variant mutagenesis ( $\sim 2 \times 10^{-8}$ ). CMT1A triplications are observed at a frequency of 1 out of every 550 duplications consistent with the rate of formation being  $\times 100$  greater than duplication formation at this locus.

lengthy single stranded DNA with a 3' overhang. This exposed 3' end of a long flexible single stranded DNA could then scan through space and find a complementary sequence (i.e., microhomology) to prime the repair. The primer would be extended by a new low processivity DNA polymerase that can disassociate repeatedly (poor processivity). It would reform at different templates and complete replication resulting in an apparent breakpoint complexity.

From this model, it was easy to explain potential chromosome consequences of template switches during MMBIR. A duplication was explained by a sister chromatid template switch behind the position of fork collapse while a deletion would occur when a template switch occurred to a sister chromatid ahead of the position of the fork breakage. Template switch to a homolog of the wrong orientation resulted in an inversion while nonhomologous sequences or a separate chromosome would result in translocation. If the template switch occurred to sequences already duplicated this could lead to a triplication and if such template switch occurred in the same molecule behind the break a rolling circle mechanism could ensue with subsequent genomic amplification [Hastings et al., 2009]. MMBIR might also be utilized at telomeres where single-ended, double-stranded DNA might present for repair [Lowden et al., 2011; Yatsenko et al., 2012].

A replicative mechanism could drive evolution of genomes, chromosomes, and individual genes, the latter by shuffling exons via a template switch occurring in intronic sequences before and then after an individual exon. The FoSTeS/MMBIR replication based mechanisms (RBM) were shown to be associated also with an unusual form of observed complex genomic rearrangement (CGR) product defined as a complex triplication consisting of a duplica-

tion—inverted triplication—duplication (DUP-TRP/INV-DUP) [Carvalho et al., 2011]. Moreover, evidence suggested that the polymerase involved was error prone in comparison to the intergenerational polymerases with apparently reduced fidelity causing an “error prone” increase in point mutations or SNV around the breakpoint [Carvalho et al., 2013]. Thus, the properties of the involved polymerase began to emerge—it appeared to have reduced processivity, as it could switch templates over long distance and insert short templated sequences at the breakpoint junctions as it loaded on, extended, and then fell off and reloaded at a new template reflecting its reduced processivity, as well as show lower fidelity than intergenerational polymerases. For nonrecurrent rearrangements, those in which breakpoint junctions occur at distinct loci in each subject/patient, it was found that RBM appear to play a prominent role, particularly in CGR.

The MMBIR model predicted four potential outcomes that could be searched for experimentally. These included: (1) increased SNV mutagenesis concomitant with CGR, as has been observed with break induced replication (BIR), (2) copy number neutral absence of heterozygosity (AOH) when template switch occurred to a homolog versus a sister, (3) amplification of sequences to quadruplications and beyond by virtue of a rolling circle type mechanism, and (4) conservative rather than semiconservative DNA replication. Experimental evidence for all four of these predicted outcomes have now been recently obtained [Carvalho et al., 2013; Malkova and Ira, 2013; Saini et al., 2013; Wilson et al., 2013; Beck et al., 2015; Carvalho et al., 2015].

## TRIPPLICATION FORMATION

Initial observations by Calvin Bridges in 1936 at the *Bar* locus identified a rare phenotype known as *ultrabar* with a more severe slit eye phenotype, and this was shown by polytene chromosome studies to be associated with triplication at the locus rather than the duplication associated with *Bar* (Fig. 3). Thus, we sought to identify triplications at the CMT1A duplication locus with the potential possibility that such an event could lead to a more severe clinical phenotype. Moreover, we wanted to explore the frequency of triplication versus duplication given the initial observations by Charles Zeleny of triplication occurring in two out of every 14,000 flies with duplication [Zeleny, 1921]. However, he could not determine the frequency of the *de novo* duplication mutational event because he did not find any evidence for the *Bar* locus trait in the 46,290 flies examined from stocks in the collections of the fly room (Fig. 4).

With the implementation of clinical testing for the CMT1A duplication in patient populations, and the determination of CNV using an MLPA (multiplex ligation dependent probe amplification) assay, this MLPA assay



could be calibrated with array comparative genomic hybridization (CGH) to distinguish duplication from triplication at the CMT1A locus. Systematic studies applying the MLPA assay in patients with neuropathy occurring during a six year interval, 2007–2012, in a clinical diagnostic lab ensued. Triplications were identified in about 1 in every 550 copy number gains at the CMT1A duplication locus [Liu et al., 2014a]. This was  $\sim 100$  times more frequent than the *de novo* CMT1A duplication as measured by single sperm PCR assay ( $2 \times 10^{-5}$ ) [Turner et al., 2008] (Fig. 4). Thus, the duplication goes to triplication at a higher mutational frequency than the rate at which *de novo* duplication is formed. Further work suggested that increased mutational frequency occurred because of the fact that one can proceed from duplication to triplication by virtue of many more NAHR substrate mechanism choices (e.g., a larger genomic interval segmentally duplicated on one allele) [Liu et al., 2014a]. At the STS locus 1/20 recurrent gains observed in a clinical population were found to be triplications [Liu et al., 2011a], potentially reflecting both more substrate choices and increased concentration of the HR hotspot motif. However, the dup-to-trp frequency may be overestimated at the STS locus because the prevalence may be higher than the incidence for this X-linked event that may not manifest a phenotype affecting fitness in carrier females. Interestingly, NAHR occurs meiotically, thus to generate triplication it takes more than one generation and occurs from a duplication substrate.

Triplication does not always occur by a simple NAHR and duplication proceeding to triplication. Early on we identified a novel complex genomic rearrangement product that consisted of a triplication embedded within and surrounded by duplications in which the triplicated genomic fragment was in an inverted orientation. This DUP-TRP/INV-DUP CGR was shown to occur by a two-step template switching mechanism and thus, it became clear that replicative mechanisms allow for a diversity of genomic rearrangement products [Carvalho et al., 2011]. Moreover, the triplicated segments in inverted orientation results often in the generation of a new gene by virtue of using the reverse complement strand to make a novel fusion gene. Like the potential for exon shuffling, this latter observation again links FoSTeS/MMBIR to an important evolutionary change—new gene formation.

#### COMPLEX GENOMIC REARRANGEMENTS—FURTHER COMPLEXITIES TO MUTAGENESIS

The RBM (FoSTeS/MMBIR) also explained some of the very complex genomic rearrangements (CGR) observed to occur somatically in association with cancers. This phenomena was initially described from whole genome sequencing studies of  $\sim 800$  cancers and referred

to as “chromothripsis”—that was proposed to result from a shattering process and then a gluing together potentially by homologous end joining [Stephens et al., 2011]. Similar complex chromosomal rearrangement products were also elucidated in patients with developmental disabilities as constitutional mutational events. They were identified and further characterized by using high resolution array CGH and SNP chips in combination with breakpoint junction analyses. These CGR were generated in the germline, or postzygotically during early embryogenesis, and thus were found in constitutional genomes rather than occurring somatically in cancer genomes. Such complex DNA rearrangement processes were proposed to occur by FoSTeS/MMBIR particularly because such a mechanism could readily explain the observations of triplicated regions and short insertions, as well as microhomology, at breakpoint junctions [Liu et al., 2011b], and higher order amplifications as well as copy number neutral SV including inversions. The latter was referred to as chromoanapsynthesis to emphasize the potential mechanism for formation of the chromothripsis phenomenon [Maher and Wilson, 2012]. Yet a third mechanism, referred to as chromoanogenesis, postulated that the chromosome was separated from the nucleus of the cell into a mini-cell for the replicative repair of shattered chromosomes to result in the apparent observed chromothripsis phenomena [Crasta et al., 2012; Holland and Cleveland, 2012].

An additional observation from mutational studies of cancer genomes consisted of multiple point mutations, or single nucleotide variants (SNV), found as mutational patches in the human genome. This phenomena was termed kataegis in which there was apparent mutational showers of clustered mutations around the genome in association with breast cancers [Nik-Zainal et al., 2012]. The mechanism by which such mutational showers were proposed to occur was that patchy single stranded DNA was mutagenic for SNV. Recently, a unifying mechanism of apparent BIR/MMBIR that could potentially explain both chromothripsis and kataegis was proposed from studies in yeast. This novel mechanism postulated a migrating bubble during break induced replication, driven by PIF1 helicase of polymerase delta, promotes recombination-coupled DNA synthesis via bubble migration [Saini et al., 2013; Wilson et al., 2013; Sakofsky et al., 2014]. This mechanism was shown to result in conservative DNA synthesis [Malkova and Ira, 2013] rather than semiconservative DNA replication as originally described by Meselson and Stahl [1958] and further supports the MMBIR model.

#### POSTZYGOTIC SV MUTAGENESIS AND TRANSMISSION GENETICS

Mutations that occur in somatic cells can lead to cancer whereas those that occur in germ cells can cause a

sporadic genetic disease trait and then be transmitted to the next generation according to Mendelian Laws of inheritance. Recent studies suggest that new mutations may occur postzygotically more frequently than previously thought. Such postzygotic mutagenesis results in mosaicism—the presence of two or more cell lines within an organism [Lupski, 2013]. Some mutations that convey embryonic lethality can only exist in the organism in a mosaic state. Chromosomal mosaicism in humans was recognized as early as the 1960s [Hirschhorn et al., 1960]. With the advent of genomewide assays the ability to detect both chromosomal mosaicism [Cheung et al., 2007; Pham et al., 2014] and mosaicism for small genic and even exonic CNV was enabled [Zhang et al., 2009; Boone et al., 2010].

For humans during development a single cell undergoes about  $10^{16}$  mitoses during the process of becoming a multicellular adult organism. Thus, mutational mechanisms that occur mitotically, such as the replication-based mechanisms FoSTeS/MMBIR, may feature prominently in postzygotic mutagenesis. Consistent with this notion, passage number is a major contributor to SV in mouse iPS cells, and the majority of the induced CNVs show breakpoint junction characteristics that are hallmarks of RBM [Liu et al., 2014b]. If the SV mutation occurs early during embryogenesis, it may also be present in the developing germ cells and result in gonadal mosaicism; the developing child may not have disease, but as a subsequent parent may be at risk for transmitting the disease. Parental somatic mosaicism may be under recognized, and it can influence recurrence risk for a genomic disorder [Campbell et al., 2014a]. New mutations causing sporadic genetic disease are more likely to have occurred on the paternally inherited chromosome—risk of new mutation disease increases with paternal age [Kong et al., 2012]. However, the new mutation that occurs on the maternally inherited chromosome is at a higher risk of recurrence. Probabilistic modeling explains the broken symmetry of transmission genetics. Moreover, somatic mosaicism together with sexual differences in gametogenesis could potentially explain a considerable fraction of unexpected recurrences of X-linked recessive disease [Campbell et al., 2014b].

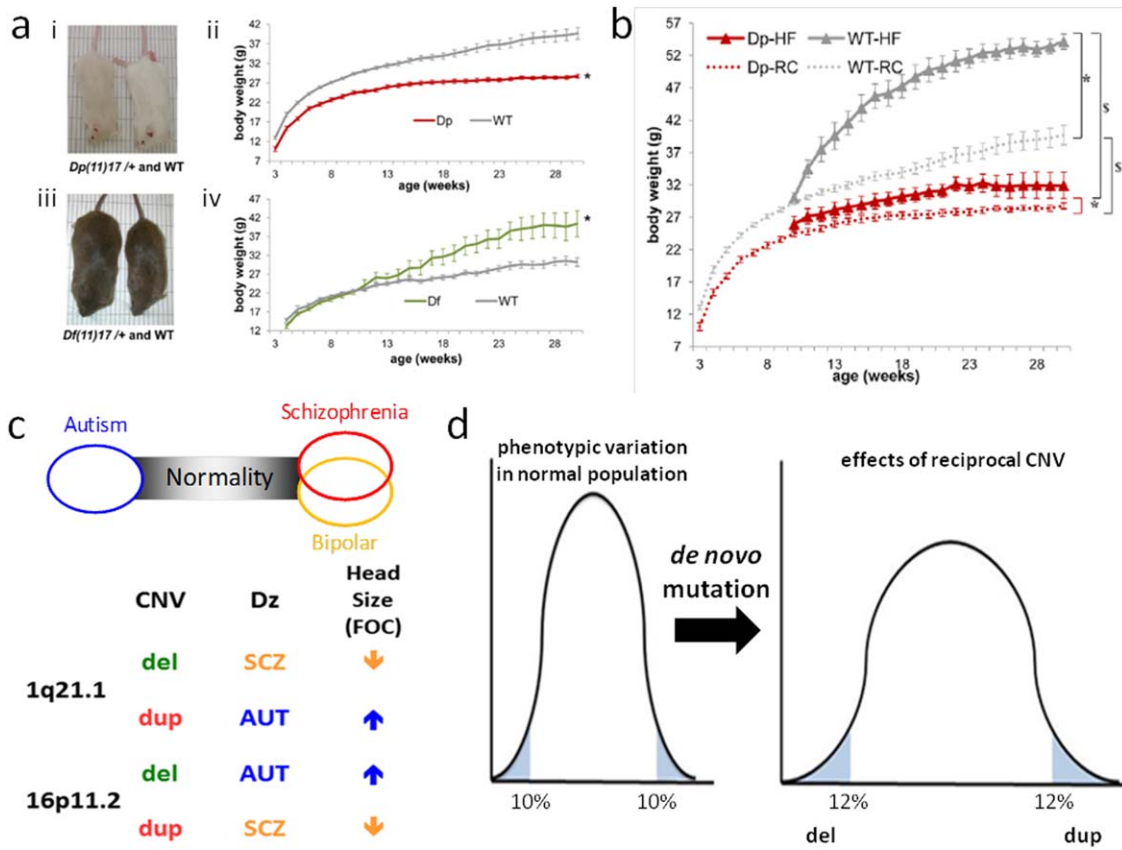
## MIRROR TRAITS

Mirror traits refer to those that appear at the opposite ends of a spectrum and represent phenotypic extremes of a bell-shaped curve signifying the distribution of trait manifestation in a population; importantly, the opposing traits are associated with reciprocal mutations (e.g., duplication vs. deletion). The concept emerged from studies of genomic disorders. Patients with Smith-Magenis syndrome associated with *del17p11.2* were anecdotally noted

to be overweight with high BMI while those with Potocki-Lupski syndrome due to *dup17p11.2* were observed to be underweight. Mouse models for these syndromes were constructed by chromosome engineering and indeed the deletion mice were overweight in a mixed genetic background as well as pure bred backgrounds, whereas the mice with duplication were underweight [Walz et al., 2003, 2006; Ricard et al., 2010] (Fig. 5a). Moreover, whereas the deletion syndrome animal model mice, like patients, were found to be prone to obesity and manifest metabolic syndrome; the duplication mice were protected from diet-induced obesity when fed a “super-sizing” high fat diet revealing gene X environmental interactions at a CNV locus [Lacaria et al., 2012a,b] (Fig. 5b). Even complex behaviors, as exemplified by “licking behavior” in mice “could be shown to objectively and quantitatively manifest as mirror traits in these del/dup CNV animal models [Heck et al., 2012]. This was of interest given that the PTLs duplication was initially reported in association with autism in some patients [Potocki et al., 2000, 2007] and objectively found in 11 of 15 subjects tested [Treadwell-Deering et al., 2010]. Moreover, in the PTLs animal model the objectively assessed CNV-based autistic like traits could be mitigated by enriched rearing [Lacaria et al., 2012b].

In humans, studies at the *1q21.2* and *16p11.2* loci revealed mirror traits for head size; whereas *1q21.1* deletion was associated with small head size or microcephaly, *1q21.1* duplication were shown to have macrocephaly [Brunetti-Pierri et al., 2008] (Fig. 5c). Interestingly, the mirror trait is expressed in a reciprocal manner at the *16p11.2* locus: deletion associated with macrocephaly and microcephaly found with duplication [Shinawi et al., 2010] (Fig. 5c). These findings were quite remarkable in light of a prominent theory regarding evolution of the social brain that posited that autism and schizophrenia represented opposing phenotypic extremes of normal human behavior [Crespi et al., 2010]. Interestingly, *del16p11.2* was identified in association with autism [Weiss et al., 2008] while *dup16p11.2* was found with schizophrenia [McCarthy et al., 2009; Shinawi et al., 2010]. The reciprocal is observed at *1q21.1*; deletion is associated with schizophrenia [International Schizophrenia, 2008; Lupski, 2008; Stefansson et al., 2008], duplication tends towards autism (Fig. 5c).

Thus, CNV and mirror traits may have an important function during evolution enabling extension of phenotypes at either end of a spectrum by variation at a single locus (Fig. 5d). Mirror extreme BMI phenotypes were also shown to occur in association with duplication versus deletion CNV at the *16p11.2* locus [Jacquemont et al., 2011]. Furthermore, overexpression of a human transcript for a single gene, *KCTD13* that maps within the *16p11.2* del/dup critical genomic interval, in zebrafish embryos identified it as the sole message capable of inducing



**Fig. 5.** Mirror traits and CNV. (A) Chromosome engineered animal models for genomic disorders due to heterozygous duplication CNV. (*Dp(11)17/+* modeling Potocki-Lupski syndrome) and reciprocal deletion CNV (*Df(11)17/+* modeling Smith-Magenis syndrome) show mirror traits for weight. The duplication animals are underweight while the deletion (deficiency) animals are overweight regardless of genetic background recapitulating observations in humans. (B) Remarkably, the deletion animals develop metabolic syndrome whereas the duplication animals are protected from diet induced obesity [Lacaria et al., 2012]. (C) Human

deletion versus reciprocal duplication CNV convey mirror traits for head size (fronto-occipital circumference, FOC); upward arrows representing macrocephaly or enlarged head size. These are associated with behavioral traits hypothesized by a prominent social anthropology theory to represent mirror image phenotypic extremes of behavior; autism (AUT) versus schizophrenia (SCZ) [summarized in Lupski, 2012]. (D) Graphical representation depicting how deletion versus duplication can affect a normally distributed trait at mirror ends of the phenotypic extremes.

microcephaly. Reduced expression of the same gene yielded a macrocephaly phenotype recapitulating the mirror trait observations at the 16p11.2 locus [Golzio et al., 2012].

**CLINICAL GENOMICS—ASSAYING STRUCTURAL VARIANT MUTAGENESIS**

Clinical genomics is perhaps best defined as the implementation and application of human genome information and personal variation to the practice of clinical medicine. The development of such genomewide assays could not have taken place until a reference human genome was established [Lander et al., 2001; International Human Genome Sequencing, 2004] that enabled a scaffold for probes allowing interrogation of specific genomic intervals for variation (CNV) that might be associated with and explain disease pathology [Stankiewicz and Lupski,

2010]. Previous work had established the utility of clinical cytogenetics initially with the elucidation of disorders based on an alteration in the chromosome number, such as trisomy 21 linked to Down syndrome, with subsequent microscopically visible deletions, duplications, and translocations, both balanced and unbalanced, being resolved and associated with disease pathology as the resolution of human chromosomes was technically improved (Table II). However, until *de novo* submicroscopic CNV could be robustly identified, their role in sporadic diseases was not generally appreciated [Lupski, 2007b].

As the mechanisms for copy number variation were more clearly elucidated (Fig. 6) and human genome instability better understood, these led to informed design of genomewide arrays that could be applied in the clinic. Such genomewide arrays were able to detect CNV of relatively small sizes (<10 kb) including a design that focused the interrogating oligonucleotides into every exon of known OMIM (<http://www.ncbi.nlm.nih.gov/omim>) gene and

could readily detect exon dropouts whereby a single exon would be removed or potentially shuffled around the genome. CNV studies in patients over a period of one decade at Baylor College of Medicine resulted in over 66,000 clinical arrays that were signed-out. These clinical genomic studies documented a number of principles and lessons learnt that could be gleaned from the personal

**TABLE II. Brief History of Human Genome Analysis**

1956	Human chromosomes number = 46
1959 and 1960s	Abnormalities in chromosome number,- Down syndrome trisomy 21 [47, XY +21] -Turner Syndrome 45, X -chromosome mosaicism 46, XY/45, X
1970s	Banding techniques, detect subtle aberrations of chromosome structure
1981	1st microdeletion Sx described in Kleberg Cytogenetics Laboratory; Prader-Willi Sx
1980s	Fluorescence <i>in situ</i> hybridization or FISH; limit to small genomic interval
1990s	Telomere FISH—simultaneously assay chromosome ends <sup>a</sup>
21st century the postgenomic era	Array CGH scan entire genome for submicroscopic CNV. Personal genome sequence (WGS and WES) <sup>b</sup>

<sup>a</sup>Demarcates a conceptual shift in thinking from single locus to multi locus testing.

<sup>b</sup>WGS, whole genome sequence; WES, whole exome sequence.

genomes of these patient population studies (Fig. 6). Major improvements that enabled more genomic diagnoses included; (i) the addition of more oligonucleotide probes to arrays enabling higher resolution of the assay and the ability to detect smaller genomic changes, (ii) the addition of “exonic probes” to resolve intragenic and even single exon changes [Boone et al., 2010, 2013], (iii) combining the abilities to obtain CGH data and SNP data in a single platform [Wiszniewska et al., 2014], and (iv) mechanistic informed designs that accounted for predicted regions of genomic instability [Dittwald et al., 2013b].

However, it would take several more years for the development of next generation multiple parallel sequencing to detect rare variant SNV potentially associated with human disease traits [Gonzaga-Jauregui et al., 2012]. Such implementation was brought about, as in the case for CNV analysis, by again having a reference human genome sequence with which to compare sequence variation (SNV) genomic data generated from individuals. But it also required reduction in the cost of generating genomic information—heralded by the advent of next generation sequencing—to enable the generation of diploid sequence information of an individual’s personal genome. The first genome to be sequenced by next generation sequencing was that of James D. Watson, and this publication occurred 55 years after the elucidation of the Watson–Crick model of DNA [Wheeler et al., 2008]. From these whole genome sequencing (WGS) studies, it became apparent that personal genomes have tremendous

## CNV studies in patients: lessons learned

> 66,000 personal genomes studied!

- 1) A locus can be subject to *recurrent or non-recurrent* events.
- 2) All rearrangement mechanisms possible at a locus, but particular type may be favored by *local genome architecture*.
- 3) For NAHR, ectopic synapsis appears to precede *ectopic crossovers*
- 4) Gains (dup, trp) losses (del) & complexities can occur: replicative/microhomology - mediated mechanisms often predominate
- 5) Replicative mechanisms (FoSTeS/MMBIR) contribute significantly to BOTH genome & gene/exonic evolution
- 6) Replicative rearrangement mechanisms (mitotic) often occur postzygotically and contribute to *mosaicism*
- 7) Diseases are often sporadic due to *de novo* mutations.
- 8) New mutations, locus specific rates, are quite frequent for CNV ( $10^{-6}$  to  $10^{-4}$ ) compared to SNV ( $10^{-8}$ ) [100X – 10,000X !!!].
- 9) CNV and SNV similar allelic architecture; many rare variant alleles and continued novelty.
- 10) Reciprocal CNV (gains vs losses) can produce *mirror traits*.

### Apparently Simple Genomic Rearrangements

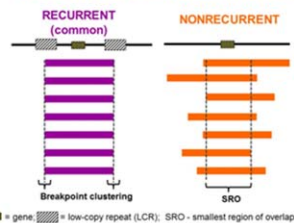


Fig. 6. Ten general principles of structural variation mutagenesis.



variation. There were millions of bases that showed no match to the human haploid reference sequence. Both SNV and CNV vary a lot, and the allele frequency spectrum of CNV revealed smaller CNV, particularly less than 1,000 base pairs were more frequent. The amount of variation made it challenging to interpret what was relevant variation with respect to clinical medicine as well as to the personal health of that individual. Variation of African personal genomes was greater in frequency than found in Caucasian genomes [Schuster et al., 2010].

With the ability to perform rare variant detection, WGS of an individual with a specific recessive Mendelian neuropathy was performed to determine if the causative variation could be identified. Indeed, compound heterozygous variant alleles at the *SH3TC2* locus were identified [Lupski et al., 2010]—the power of personal genome sequencing was revealed to me and indeed became personal. I had studied CMT neuropathy, a disease that segregates as an autosomal recessive trait in my family, for over 25 years but never knew the molecular basis of my own disease until my genome was sequenced! Subsequent analyses and further whole exome sequencing (WES) documented that one of those *SH3TC2* alleles was actually more complex than originally thought and identified by the initial sequencing technology that was utilized [Lupski et al., 2013]. Additional studies of this genome enabled the development of tools for assessing SVs and towards the establishment of a reference diploid human genome [English et al., 2015].

The next milestone for potential clinical implementation was to see if specific variation could be identified and how it might enable an approach to therapy that had not been considered previously. Here a set of fraternal twins with L-DOPA-responsive dystonia was studied by WGS, and remarkably variation in the sepiapterin reductase locus *SPR* was identified [Bainbridge et al., 2011]. This enabled a new therapy to be tried that would not only treat the defective dopamine pathway but also the serotonergic pathway by supplementation with 5HT. Indeed, the patients seemed to respond better clinically to this additional supplementation than without it [Bainbridge et al., 2011]. With these WGS and WES studies demonstrating proof of principal, and exome capture for whole exome sequencing being more robustly developed, it now enabled sequencing to be done at a cost enabling clinical implementation. At Baylor College of Medicine this began in November 2011 and ~230 clinical WES are now performed per month, with the slope of the curve ever increasing, suggesting future widespread implementation of this clinical technology [Yang et al., 2013; The Deciphering Developmental Disorders, 2014; Wright et al., 2015; Yang et al., 2014].

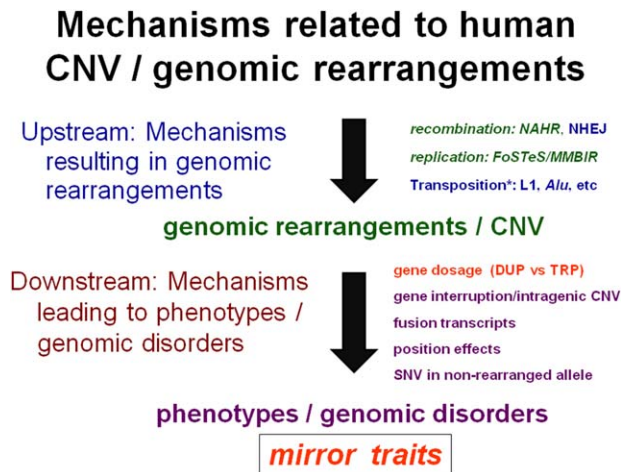
As was found with the implementation of clinical arrays, once large numbers of patients were studied, the genomic sequencing revealed novel findings regarding the

genetic architecture of human disease. In a pilot study of 250 cases, a remarkable frequency of 25% diagnostic yield was made; 62 molecular diagnoses in 250 cases. These studies confirmed and further demonstrated the remarkable genetic heterogeneity of a number of clinical phenotypes including Cornelia de Lange and Noonan syndromes. Most interestingly, four subjects were found to have two mutations at two Mendelian loci that could explain a diagnostic dilemma by virtue of a blended phenotype where the patient had features of each syndrome blended together [Yang et al., 2013]. Subsequent work on the next 2,000 clinical exomes confirmed the observation from pilot studies that ~4–5% of patients with diagnostic dilemmas that were referred for WES had two molecular diagnoses resulting in a blended phenotype. Moreover, rare genetic events for molecular diagnoses, including a high frequency of *de novo* mutation, many novel variants, mosaicism, and uniparental disomy, as well as combinations of SNV + CNV [Bayer et al., 2014] at a recessive disease locus, were identified in patients [Yang et al., 2014].

## ENVIRONMENTALLY INDUCED SV MUTAGENESIS

As clinical genomics permeates medical research and eventually clinical practice, *Homo sapiens* become not only the “model organism” of choice, but rather are perhaps better characterized as a pioneer organism. Medical research seeks to understand disease and to identify what genetic and environmental exposures result in perturbations of biological systems and networks resulting in susceptibility to disease. Human genetics and genomics experiments are data rich allowing derivation of models testable in model organisms. Delineating the mechanisms for SV/CNV mutagenesis has helped provide insights into environmentally induced SV mutagenesis.

Initial genetic screens in yeast for gene mutations that cause an increase in rearrangements (CNV/SV) utilized a gene dosage assay to screen for spontaneous duplication in a single gene [Payen et al., 2008]. Surprisingly, this screen did not identify any genes affecting genetic recombination, but instead found only a gene important to DNA replication—the *pol32* gene encoding a subunit of DNA polymerase delta! [Payen et al., 2008]. Microhomologies were found at breakpoint junctions, and the duplication CNV occurred in the apparent absence of the NHEJ pathway. Interestingly, Pol32 had been previously shown to be involved in break-induced replication (BIR) [Lydeard et al., 2007]. Thus, long distance template switching, microhomology mediated junctional events, the involvement of DNA replicative processes, and the lack of classical recombination pathways including NHEJ—all predicted by models (FoSTeS/MMBIR) formulated based on experimental observations in human subjects with



**Fig. 7.** Upstream and downstream mechanisms in structural variation mutagenesis.

genomic disorders—were also recapitulated in the yeast model organism.

Moreover, exposure to compounds that cause replication stress, in this case aphidicolin, which directly inhibits DNA polymerase function and can lead to stalled replication forks, increases *de novo* CNV formation. Incredibly, breakpoint junction analyses of these fork stall-induced CNV reveal microhomologies at the junctions [Arlt et al., 2009]. Such induced CNV in human cells were also observed with exposure to hydroxyurea [Arlt et al., 2011]. These environmental exposure induced events, apparently mediated by a FoSTeS/MMBIR replicative mechanism, occurred in the absence of the NHEJ pathway in mouse *Xrcc4*<sup>-/-</sup> cells and included both CGR and chromothripsis/chromoanaysynthesis/chromoanagenesis like structural changes [Arlt et al., 2012].

These mechanistic studies document that chemical exposures (aphidicolin and hydroxyurea) and ionizing radiation [Arlt et al., 2014] can induce SV mutagenesis. However, studies are needed to establish background rates for SV mutagenesis in humans somatic cells and understand what exposures might influence these rates and potentially result in further susceptibility to cancer. In addition, it is necessary to establish background levels of variability in germline mutation rates genome-wide for CNV and SNV and identify environmental agents that influence these rates and heritable disease [Yauk et al., 2013].

#### CNV AND SV IN EVOLUTION, HEALTH, AND DISEASE

Mutational studies in genomic disorders delineated the role of CNV in disease, experimentally defined recurrent versus nonrecurrent events, documented the role of new mutation in sporadic traits, demonstrated the increased frequency of *de novo* mutation for CNV versus SNV, and

even derived mechanisms for SV mutagenesis (NAHR, FoSTeS/MMBIR)(Figs. 3 and 7). In the “post-genomic era” and with the application of genome-wide assays, the extent of SV/CNV in the human genome became apparent [Iafate et al., 2004; Sebat et al., 2004; Redon et al., 2006; Conrad et al., 2010; Mills et al., 2011], and insights into human evolution [Dumas et al., 2007; Lupski, 2007a; Perry et al., 2007; Dumas et al., 2012] and environmentally mediated SV mutagenesis [Arlt et al., 2012] began to be elucidated. Thus, SV mutagenesis is important to genome biology, gene, and genome evolution, human biology, and to trait manifestations including susceptibility to both rare and common disease. The ability to measure genetic variation (SNV, CNV/SV) genome-wide enables one to contemplate measuring background rates of intergenerational mutagenesis and examine the potential influences of environmental exposures on these rates [Yauk et al., 2015].

Replication-based mechanisms (FoSTeS/MMBIR) feature prominently in upstream CNV formation (Fig. 7), whereas downstream mechanisms resulting in phenotypic consequences of SV may be mediated by gene-dosage effects of a single [Lalani et al., 2014] or multiple genes [Carvalho et al., 2014] or by breakpoint junctions that disrupt a gene, alter its regulation, or create a novel gene fusion (Fig. 7). A novel consequence of reciprocal CNV and gene dosage is the concept of mirror traits. Other diseases will be defined, gene function delineated, and novel genetic mechanisms for both rare and common/complex disorders elucidated by CNV studies [Lupski et al., 2013; Riccardi and Lupski, 2013; Trivellin et al., 2014; Wu et al., 2015].

The elucidation of CNV and the concepts of (i) genomic disorders, (ii) gene dosage in trait manifestation, and (iii) new mutation CNV and sporadic traits, have helped bridge the gaps in our knowledge of mutations causing disease and our understanding between single gene Mendelizing disease traits and chromosomal syndromes. Furthermore, the seemingly disparate categories of disease consisting of chromosomal syndromes, Mendelian disease and common/complex traits with our understanding of genomic disorders can now all be thought of in the context of genome variation rather than mutation at a single locus [Lupski et al., 2011]. Driven by the human genome project and technical innovations in genomics, the field of human and medical genetics has been opened up to exploration of the underlying genetic architecture of disease. The Clan Genomics hypothesis, which posits that recently arising mutations in you or recent ancestors in your Clan, rather than population specific and prevalent variation, can be tested for its relevance to disease trait manifestation [Lupski et al., 2011]. As such, avoiding environments with chemical exposures that might cause SV mutagenesis, including in germ cells and during early embryologic development, and avoiding the introduction

of compounds into the environment that might stimulate SV mutagenesis, seems prudent.

## ACKNOWLEDGMENTS

I thank all of the patients and families who volunteered to participate and collaborate in our research efforts and my colleagues Claudia Carvalho, Pengfei Liu, Pawel Stankiewicz, and Tamar Harel for critical reviews. I am also grateful for the generous support of the National Institute of Neurological Disorders and Stroke (NINDS), the National Institute of Child Health and Development (NICHD), the National Eye Institute (NEI), the National Human Genome Research Institute (NHGRI), the Muscular Dystrophy Association, the March of Dimes, the Smith-Magenis Syndrome Research Foundation (SMSRF), the Parents and Researchers Interested in Smith-Magenis Syndrome (PRISMS), and the CMT Association. I also thank the Environmental Mutagenesis and Genomics Society for their 2014 Annual Award and for honoring the Lupski laboratory in such a manner.

## REFERENCES

- Arlt MF, Mülle JG, Schaibley VM, Ragland RL, Durkin SG, Warren ST, Glover TW. 2009. Replication stress induces genome-wide copy number changes in human cells that resemble polymorphic and pathogenic variants. *Am J Hum Genet* 84:339–350.
- Arlt MF, Ozdemir AC, Birkeland SR, Wilson TE, Glover TW. 2011. Hydroxyurea induces de novo copy number variants in human cells. *Proc Natl Acad Sci U S A* 108:17360–17365.
- Arlt MF, Rajendran S, Birkeland SR, Wilson TE, Glover TW. 2012. De novo CNV formation in mouse embryonic stem cells occurs in the absence of Xrcc4-dependent nonhomologous end joining. *PLoS Genet* 8:e1002981.
- Arlt MF, Rajendran S, Birkeland SR, Wilson TE, Glover TW. 2014. Copy number variants are produced in response to low-dose ionizing radiation in cultured cells. *Environ Mol Mutagen* 55:103–113.
- Bainbridge MN, Wiszniewski W, Murdock DR, Friedman J, Gonzaga-Jauregui C, Newsham I, Reid JG, Fink JK, Morgan MB, Gingras MC, et al. 2011. Whole-genome sequencing for optimized patient management. *Sci Transl Med* 3:87re83.
- Barbouth A, Stankiewicz P, Nusbaum C, Cuomo C, Cook A, Hoglund M, Johansson B, Hagemeyer A, Park SS, Mitelman F, et al. 2004. The breakpoint region of the most common isochromosome, i(17q), in human neoplasia is characterized by a complex genomic architecture with large, palindromic, low-copy repeats. *Am J Hum Genet* 74:1–10.
- Bayer DK, Martinez CA, Sorte HS, Forbes LR, Demmler-Harrison GJ, Hanson IC, Pearson NM, Noroski LM, Zaki SR, Bellini WJ, et al. 2014. Vaccine-associated varicella and rubella infections in severe combined immunodeficiency with isolated CD4 lymphocytopenia and mutations in IL7R detected by tandem whole exome sequencing and chromosomal microarray. *Clin Exp Immunol* 178:459–469.
- Beck CR, Carvalho CMB, Banser L, Gambin T, Stubbolo D, Yuan B, Sperle K, McCahan SM, Henneke M, Seeman P, et al. 2015. Complex genomic rearrangements at the *PLP1* locus includes triplication and quadruplication. *PLoS Genet* 11:e1005050. doi:10.1371/journal.pgen.1005050
- Berg IL, Neumann R, Lam KW, Sarbajna S, Odenthal-Hesse L, May CA, Jeffreys AJ. 2010. PRDM9 variation strongly influences recombination hot-spot activity and meiotic instability in humans. *Nat Genet* 42:859–863.
- Bi W, Park SS, Shaw CJ, Withers MA, Patel PI, Lupski JR. 2003. Reciprocal crossovers and a positional preference for strand exchange in recombination events resulting in deletion or duplication of chromosome 17p11.2. *Am J Hum Genet* 73:1302–1315.
- Blakeslee AF. 1922. Variations in *datura* due to changes in chromosome number. *Am Nat* 64:216–31.
- Boone PM, Bacino CA, Shaw CA, Eng PA, Hixson PM, Pursley AN, Kang SH, Yang Y, Wiszniewska J, Nowakowska BA, et al. 2010. Detection of clinically relevant exonic copy-number changes by array CGH. *Hum Mutat* 31:1326–1342.
- Boone PM, Campbell IM, Baggett BC, Soens ZT, Rao MM, Hixson PM, Patel A, Bi W, Cheung SW, Lalani SR, et al. 2013. Deletions of recessive disease genes: CNV contribution to carrier states and disease-causing alleles. *Genome Res* 23:1383–1394.
- Bridges CB. 1936. The bar "Gene" a duplication. *Science* 83:210–211.
- Brunetti-Pierri N, Berg JS, Scaglia F, Belmont J, Bacino CA, Sahoo T, Lalani SR, Graham B, Lee B, Shinawi M, et al. 2008. Recurrent reciprocal 1q21.1 deletions and duplications associated with microcephaly or macrocephaly and developmental and behavioral abnormalities. *Nat Genet* 40:1466–1471.
- Campbell IM, Stewart JR, James RA, Lupski JR, Stankiewicz P, Olofsson P, Shaw CA. 2014a. Parent of origin, mosaicism, and recurrence risk: Probabilistic modeling explains the broken symmetry of transmission genetics. *Am J Hum Genet* 95:345–359.
- Campbell IM, Yuan B, Robberecht C, Pfundt R, Szafranski P, McEntagart ME, Nagamani SC, Erez A, Bartnik M, Wisniewicka-Kowalik B, et al. 2014b. Parental somatic mosaicism is underrecognized and influences recurrence risk of genomic disorders. *Am J Hum Genet* 95:173–182.
- Carvalho CM, Zhang F, Lupski JR. 2010. Evolution in health and medicine Sackler colloquium: Genomic disorders: A window into human gene and genome evolution. *Proc Natl Acad Sci U S A* 107 (Suppl 1):1765–1771.
- Carvalho CM, Ramocki MB, Pehlivan D, Franco LM, Gonzaga-Jauregui C, Fang P, McCall A, Pivnick EK, Hines-Dowell S, Seaver LH, et al. 2011. Inverted genomic segments and complex triplication rearrangements are mediated by inverted repeats in the human genome. *Nat Genet* 43:1074–1081.
- Carvalho CM, Pehlivan D, Ramocki MB, Fang P, Alleva B, Franco LM, Belmont JW, Hastings PJ, Lupski JR. 2013. Replicative mechanisms for CNV formation are error prone. *Nat Genet* 45:1319–1326.
- Carvalho CM, Vasanth S, Shinawi M, Russell C, Ramocki MB, Brown CW, Graakjaer J, Skytte AB, Vianna-Morgante AM, Krepischki AC, et al. 2014. Dosage changes of a segment at 17p13.1 lead to intellectual disability and microcephaly as a result of complex genetic interaction of multiple genes. *Am J Hum Genet* 95:565–578.
- Carvalho CM, Pfundt R, King DA, Lindsay SJ, Zuccherato LW, Macville MVE, Liu P, Johnson D, Stankiewicz P, Brown CW, et al. 2015. Absence of heterozygosity due to template switching during replicative rearrangements. *Am J Hum Genet*, in press. doi: <http://dx.doi.org/10.1016/j.ajhg.2015.01.021>.
- Chance PF, Alderson MK, Leppig KA, Lensch MW, Matsunami N, Smith B, Swanson PD, Odelberg SJ, Distechi CM, Bird TD. 1993. DNA deletion associated with hereditary neuropathy with liability to pressure palsies. *Cell* 72:143–151.
- Chance PF, Abbas N, Lensch MW, Pentao L, Roa BB, Patel PI, Lupski JR. 1994. Two autosomal dominant neuropathies result from reciprocal DNA duplication/deletion of a region on chromosome 17. *Hum Mol Genet* 3:223–228.
- Chen KS, Manian P, Koeth T, Potocki L, Zhao Q, Chinault AC, Lee CC, Lupski JR. 1997. Homologous recombination of a flanking repeat gene cluster is a mechanism for a common contiguous gene deletion syndrome. *Nat Genet* 17:154–163.



- Cheung SW, Shaw CA, Scott DA, Patel A, Sahoo T, Bacino CA, Pursley A, Li J, Erickson R, Gropman AL, et al. 2007. Microarray-based CGH detects chromosomal mosaicism not revealed by conventional cytogenetics. *Am J Med Genet A* 143A:1679–1686.
- Conrad DF, Bird C, Blackburne B, Lindsay S, Mamanova L, Lee C, Turner DJ, Hurler ME. 2010. Mutation spectrum revealed by breakpoint sequencing of human germline CNVs. *Nat Genet* 42: 385–391.
- Crasta K, Ganem NJ, Dagher R, Lantermann AB, Ivanova EV, Pan Y, Nezi L, Protopopov A, Chowdhury D, Pellman D. 2012. DNA breaks and chromosome pulverization from errors in mitosis. *Nature* 482:53–58.
- Crespi B, Stead P, Elliot M. 2010. Evolution in health and medicine Sackler colloquium: Comparative genomics of autism and schizophrenia. *Proc Natl Acad Sci U S A* 107(Suppl 1):1736–1741.
- Delabar JM, Goldgaber D, Lamour Y, Nicole A, Huret JL, de Grouchy J, Brown P, Gajdusek DC, Sinet PM. 1987. Beta amyloid gene duplication in Alzheimer's disease and karyotypically normal Down syndrome. *Science* 235:1390–1392.
- Dittwald P, Gambin T, Gonzaga-Jauregui C, Carvalho CM, Lupski JR, Stankiewicz P, Gambin A. 2013a. Inverted low-copy repeats and genome instability—A genome-wide analysis. *Hum Mutat* 34: 210–220.
- Dittwald P, Gambin T, Szafranski P, Li J, Amato S, Divon MY, Rodriguez Rojas LX, Elton LE, Scott DA, Schaaf CP, et al. 2013b. NAHR-mediated copy-number variants in a clinical population: Mechanistic insights into both genomic disorders and Mendelizing traits. *Genome Res* 23:1395–1409.
- DiVencenzo C, Elzinga CD, Medeiros AC, Karbassi I, Jones JR, Evans MC, Braastad CD, Bishop CM, Jaremko M, Wang Z, et al. 2014. The allelic spectrum of Charcot-Marie-Tooth disease in over 17,000 individuals with neuropathy. *Mol Genet Genomic Med* 2: 522–529.
- Dumas L, Kim YH, Karimpour-Fard A, Cox M, Hopkins J, Pollack JR, Sikela JM. 2007. Gene copy number variation spanning 60 million years of human and primate evolution. *Genome Res* 17: 1266–1277.
- Dumas LJ, O'Bleness MS, Davis JM, Dickens CM, Anderson N, Keeney JG, Jackson J, Sikela M, Raznahan A, Giedd J, et al. 2012. DUF1220-domain copy number implicated in human brain-size pathology and evolution. *Am J Hum Genet* 91:444–454.
- English AC, Salerno WJ, Hampton OA, Gonzaga-Jauregui C, Ambreth S, Ritter DI, Beck CR, Davis CF, Dahdouli M, Ma S, et al. 2015. Assessing structural variation in a personal genome. *BMC Genomics*, in press.
- Golzio C, Willer J, Talkowski ME, Oh EC, Taniguchi Y, Jacquemont S, Reymond A, Sun M, Sawa A, Gusella JF, et al. 2012. KCTD13 is a major driver of mirrored neuroanatomical phenotypes of the 16p11.2 copy number variant. *Nature* 485:363–367.
- Gonzaga-Jauregui C, Lupski JR, Gibbs RA. 2012. Human genome sequencing in health and disease. *Annu Rev Med* 63:35–61.
- Greenberg F, Guzzetta V, Montes de Oca-Luna R, Magenis RE, Smith AC, Richter SF, Kondo I, Dobyns WB, Patel PI, Lupski JR. 1991. Molecular analysis of the Smith-Magenis syndrome: A possible contiguous-gene syndrome associated with del(17)(p11.2). *Am J Hum Genet* 49:1207–1218.
- Guzzetta V, Franco B, Trask BJ, Zhang H, Saucedo-Cardenas O, Montes de Oca-Luna R, Greenberg F, Chinault AC, Lupski JR, Patel PI. 1992. Somatic cell hybrids, sequence-tagged sites, simple repeat polymorphisms, and yeast artificial chromosomes for physical and genetic mapping of proximal 17p. *Genomics* 13: 551–559.
- Hastings PJ, Ira G, Lupski JR. 2009. A microhomology-mediated break-induced replication model for the origin of human copy number variation. *PLoS Genet* 5:e1000327.
- Heck DH, Gu W, Cao Y, Qi S, Lalaria M, Lupski JR. 2012. Opposing phenotypes in mice with Smith-Magenis deletion and Potocki-Lupski duplication syndromes suggest gene dosage effects on fluid consumption behavior. *Am J Med Genet A* 158A:2807–2814.
- Higgs DR, Old JM, Pressley L, Clegg JB, Weatherall DJ. 1980. A novel alpha-globin gene arrangement in man. *Nature* 284:632–635.
- Hirschhorn K, Decker WH, Cooper HL. 1960. Human intersex with chromosome mosaicism of type XY/XO. Report of a case. *N Engl J Med* 263:1044–1048.
- Holland AJ, Cleveland DW. 2012. Chromoanagenesis and cancer: Mechanisms and consequences of localized, complex chromosomal rearrangements. *Nat Med* 18:1630–1638.
- Iafrate AJ, Feuk L, Rivera MN, Listewnik ML, Donahoe PK, Qi Y, Scherer SW, Lee C. 2004. Detection of large-scale variation in the human genome. *Nat Genet* 36:949–951.
- Inoue K, Osaka H, Imaizumi K, Nezu A, Takanashi J, Arii J, Murayama K, Ono J, Kikawa Y, Mito T, et al. 1999. Proteolipid protein gene duplications causing Pelizaeus-Merzbacher disease: Molecular mechanism and phenotypic manifestations. *Ann Neurol* 45: 624–632.
- International Human Genome Sequencing C. 2004. Finishing the euchromatic sequence of the human genome. *Nature* 431:931–945.
- International Schizophrenia C. 2008. Rare chromosomal deletions and duplications increase risk of schizophrenia. *Nature* 455:237–241.
- Jacquemont S, Reymond A, Zufferey F, Harewood L, Walters RG, Kutalik Z, Martinet D, Shen Y, Valsesia A, Beckmann ND, et al. 2011. Mirror extreme BMI phenotypes associated with gene dosage at the chromosome 16p11.2 locus. *Nature* 478:97–102.
- Kaku DA, Parry GJ, Malamut R, Lupski JR, Garcia CA. 1993. Nerve conduction studies in Charcot-Marie-Tooth polyneuropathy associated with a segmental duplication of chromosome 17. *Neurology* 43:1806–1808.
- Kong A, Frigge ML, Masson G, Besenbacher S, Sulem P, Magnusson G, Gudjonsson SA, Sigurdsson A, Jonasdottir A, Jonasdottir A, et al. 2012. Rate of de novo mutations and the importance of father's age to disease risk. *Nature* 488:471–475.
- Lalaria M, Saha P, Potocki L, Bi W, Yan J, Girirajan S, Burns B, Elsea S, Walz K, Chan L, et al. 2012a. A duplication CNV that conveys traits reciprocal to metabolic syndrome and protects against diet-induced obesity in mice and men. *PLoS Genet* 8:e1002713.
- Lalaria M, Spencer C, Gu W, Paylor R, Lupski JR. 2012b. Enriched rearing improves behavioral responses of an animal model for CNV-based autistic-like traits. *Hum Mol Genet* 21:3083–3096.
- Lalani SR, Zhang J, Schaaf CP, Brown CW, Magoulas P, Tsai AC, El-Gharbawy A, Wierenga KJ, Bartholomew D, Fong CT, et al. 2014. Mutations in PURA cause profound neonatal hypotonia, seizures, and encephalopathy in 5q31.3 microdeletion syndrome. *Am J Hum Genet* 95:579–583.
- Lander ES, Linton LM, Birren B, Nusbaum C, Zody MC, Baldwin J, Devon K, Dewar K, Doyle M, FitzHugh W, et al. 2001. Initial sequencing and analysis of the human genome. *Nature* 409:860–921.
- Lee JA, Carvalho CM, Lupski JR. 2007. A DNA replication mechanism for generating nonrecurrent rearrangements associated with genomic disorders. *Cell* 131:1235–1247.
- Lifton RP, Dluhy RG, Powers M, Rich GM, Cook S, Ulick S, Lalouel JM. 1992. A chimeric 11 beta-hydroxylase/aldosterone synthase gene causes glucocorticoid-remediable aldosteronism and human hypertension. *Nature* 355:262–265.
- Lindsley DL, Sandler L, Baker BS, Carpenter AT, Denell RE, Hall JC, Jacobs PA, Miklos GL, Davis BK, Gethmann RC, et al. 1972.



- Segmental aneuploidy and the genetic gross structure of the *Drosophila* genome. *Genetics* 71:157–184.
- Lindsay SJ, Khajavi M, Lupski JR, Hurles ME. 2006. A chromosomal rearrangement hotspot can be identified from population genetic variation and is coincident with a hotspot for allelic recombination. *Am J Hum Genet* 79:890–902.
- Liu P, Erez A, Nagamani SC, Bi W, Carvalho CM, Simmons AD, Wiszniewska J, Fang P, Eng PA, Cooper ML, et al. 2011a. Copy number gain at Xp22.31 includes complex duplication rearrangements and recurrent triplications. *Hum Mol Genet* 20:1975–1988.
- Liu P, Erez A, Nagamani SC, Dhar SU, Kolodziejska KE, Dharmadhikari AV, Cooper ML, Wiszniewska J, Zhang F, Withers MA, et al. 2011b. Chromosome catastrophes involve replication mechanisms generating complex genomic rearrangements. *Cell* 146:889–903.
- Liu P, Lacia M, Zhang F, Withers M, Hastings PJ, Lupski JR. 2011c. Frequency of nonallelic homologous recombination is correlated with length of homology: Evidence that ectopic synapsis precedes ectopic crossing-over. *Am J Hum Genet* 89:580–588.
- Liu P, Carvalho CM, Hastings PJ, Lupski JR. 2012. Mechanisms for recurrent and complex human genomic rearrangements. *Curr Opin Genet Dev* 22:211–220.
- Liu P, Gelowani V, Zhang F, Drory VE, Ben-Shachar S, Roney E, Medeiros AC, Moore RJ, DiVincenzo C, Burnette WB, et al. 2014a. Mechanism, prevalence, and more severe neuropathy phenotype of the Charcot-Marie-Tooth type 1A triplication. *Am J Hum Genet* 94:462–469.
- Liu P, Kaplan A, Yuan B, Hanna JH, Lupski JR, Reiner O. 2014b. Passage number is a major contributor to genomic structural variations in mouse iPSCs. *Stem Cells* 32:2657–2667.
- Lowden MR, Flibotte S, Moerman DG, Ahmed S. 2011. DNA synthesis generates terminal duplications that seal end-to-end chromosome fusions. *Science* 332:468–471.
- Lupski JR. 1998. Genomic disorders: structural features of the genome can lead to DNA rearrangements and human disease traits. *Trends Genet* 14:417–422.
- Lupski JR. 2004. Hotspots of homologous recombination in the human genome: Not all homologous sequences are equal. *Genome Biol* 5:242.
- Lupski JR. 2007a. An evolution revolution provides further revelation. *Bioessays* 29:1182–1184.
- Lupski JR. 2007b. Genomic rearrangements and sporadic disease. *Nat Genet* 39:S43–S47.
- Lupski JR. 2008. Schizophrenia: Incriminating genomic evidence. *Nature* 455:178–179.
- Lupski JR. 2009. Genomic disorders ten years on. *Genome Med* 1:42.
- Lupski JR. 2013. Genetics. Genome mosaicism—One human, multiple genomes. *Science* 341:358–359.
- Lupski JR, de Oca-Luna RM, Slaugenhaupt S, Pentao L, Guzzetta V, Trask BJ, Saucedo-Cardenas O, Barker DF, Killian JM, Garcia CA, et al. 1991. DNA duplication associated with Charcot-Marie-Tooth disease type 1A. *Cell* 66:219–232.
- Lupski JR, Wise CA, Kuwano A, Pentao L, Parke JT, Glaze DG, Ledbetter DH, Greenberg F, Patel PI. 1992. Gene dosage is a mechanism for Charcot-Marie-Tooth disease type 1A. *Nat Genet* 1:29–33.
- Lupski JR, Reid JG, Gonzaga-Jauregui C, Rio Deiros D, Chen DC, Nazareth L, Bainbridge M, Dinh H, Jing C, Wheeler DA, et al. 2010. Whole-genome sequencing in a patient with Charcot-Marie-Tooth neuropathy. *N Engl J Med* 362:1181–1191.
- Lupski JR, Belmont JW, Boerwinkle E, Gibbs RA. 2011. Clan genomics and the complex architecture of human disease. *Cell* 147:32–43.
- Lupski JR, Gonzaga-Jauregui C, Yang Y, Bainbridge MN, Jhangiani S, Buhay CJ, Kovar CL, Wang M, Hawes AC, Reid JG, et al. 2013. Exome sequencing resolves apparent incidental findings and reveals further complexity of SH3TC2 variant alleles causing Charcot-Marie-Tooth neuropathy. *Genome Med* 5:57.
- Lydeard JR, Jain S, Yamaguchi M, Haber JE. 2007. Break-induced replication and telomerase-independent telomere maintenance require Pol32. *Nature* 448:820–823.
- Maher CA, Wilson RK. 2012. Chromothripsis and human disease: Piecing together the shattering process. *Cell* 148:29–32.
- Malkova A, Ira G. 2013. Break-induced replication: functions and molecular mechanism. *Curr Opin Genet Dev* 23:271–279.
- McCarthy SE, Makarov V, Kirov G, Addington AM, McClellan J, Yoon S, Perkins DO, Dickel DE, Kusenda M, Krastovshevsky O, et al. 2009. Microduplications of 16p11.2 are associated with schizophrenia. *Nat Genet* 41:1223–1227.
- Meselson M, Stahl FW. 1958. The replication of DNA. *Cold Spring Harb Symp Quant Biol* 23:9–12.
- Mills RE, Walter K, Stewart C, Handsaker RE, Chen K, Alkan C, Abyzov A, Yoon SC, Ye K, Cheetham RK, et al. 2011. Mapping copy number variation by population-scale genome sequencing. *Nature* 470:59–65.
- Nathans J, Piantanida TP, Eddy RL, Shows TB, Hogness DS. 1986. Molecular genetics of inherited variation in human color vision. *Science* 232:203–210.
- Nicholson GA, Valentijn LJ, Cherryson AK, Kennerson ML, Bragg TL, DeKroon RM, Ross DA, Pollard JD, McLeod JG, Bolhuis PA, et al. 1994. A frame shift mutation in the PMP22 gene in hereditary neuropathy with liability to pressure palsies. *Nat Genet* 6:263–266.
- Nik-Zainal S, Alexandrov LB, Wedge DC, Van Loo P, Greenman CD, Raine K, Jones D, Hinton J, Marshall J, Stebbings LA, et al. 2012. Mutational processes molding the genomes of 21 breast cancers. *Cell* 149:979–993.
- Ou Z, Stankiewicz P, Xia P, Breman AM, Dawson B, Patel A, Kang SHL, Shaw CA, Lupski JR, Cheung SW, et al. 2011. Observation and prediction of recurrent human translocations mediated by NAHR between nonhomologous chromosomes. *Genome Res* 21:33–46.
- Payen C, Koszul R, Dujon B, Fischer G. 2008. Segmental duplications arise from Pol32-dependent repair of broken forks through two alternative replication-based mechanisms. *PLoS Genet* 4:e1000175.
- Pentao L, Wise CA, Chinault AC, Patel PI, Lupski JR. 1992. Charcot-Marie-Tooth type 1A duplication appears to arise from recombination at repeat sequences flanking the 1.5 Mb monomer unit. *Nat Genet* 2:292–300.
- Perry GH, Dominy NJ, Claw KG, Lee AS, Fiegler H, Redon R, Werner J, Villanea FA, Mountain JL, Misra R, et al. 2007. Diet and the evolution of human amylase gene copy number variation. *Nat Genet* 39:1256–1260.
- Pham J, Shaw C, Pursley A, Hixson P, Sampath S, Roney E, Gambin T, Kang SH, Bi W, Lalani S, et al. 2014. Somatic mosaicism detected by exon-targeted, high-resolution aCGH in 10,362 consecutive cases. *Eur J Hum Genet* 22:969–978.
- Podlisny MB, Lee G, Selkoe DJ. 1987. Gene dosage of the amyloid beta precursor protein in Alzheimer's disease. *Science* 238:669–671.
- Potocki L, Chen KS, Park SS, Osterholm DE, Withers MA, Kimonis V, Summers AM, Meschino WS, Anyane-Yeboa K, Kashork CD, et al. 2000. Molecular mechanism for duplication 17p11.2—the homologous recombination reciprocal of the Smith-Magenis microdeletion. *Nat Genet* 24:84–87.
- Potocki L, Bi W, Treadwell-Deering D, Carvalho CM, Eifert A, Friedman EM, Glaze D, Krull K, Lee JA, Lewis RA, et al. 2007. Characterization of Potocki-Lupski syndrome (dup(17)(p11.2p11.2)) and delineation of a dosage-sensitive critical interval that can convey an autism phenotype. *Am J Hum Genet* 80:633–649.

- Raeymaekers P, Timmerman V, Nelis E, De Jonghe P, Hoogendijk JE, Baas F, Barker DF, Martin JJ, De Visser M, Bolhuis PA, et al. 1991. Duplication in chromosome 17p11.2 in Charcot-Marie-Tooth neuropathy type 1a (CMT 1a). The HMSN Collaborative Research Group. *Neuromuscul Disord* 1:93–97.
- Redon R, Ishikawa S, Fitch KR, Feuk L, Perry GH, Andrews TD, Fiegler H, Shaper MH, Carson AR, Chen W, et al. 2006. Global variation in copy number in the human genome. *Nature* 444:444–454.
- Reiter LT, Murakami T, Koeuth T, Pentao L, Muzny DM, Gibbs RA, Lupski JR. 1996. A recombination hotspot responsible for two inherited peripheral neuropathies is located near a mariner transposon-like element. *Nat Genet* 12:288–297.
- Ricard G, Molina J, Chrast J, Gu W, Gheldof N, Pradervand S, Schutz F, Young JI, Lupski JR, Reymond A, Walz K. 2010. Phenotypic consequences of copy number variation: Insights from Smith-Magenis and Potocki-Lupski syndrome mouse models. *PLoS Biol* 8:e1000543.
- Riccardi VM, Lupski JR. 2013. Duplications, deletions, and single-nucleotide variations: The complexity of genetic arithmetic. *Genet Med* 15:172–173.
- Roa BB, Garcia CA, Suter U, Kulpa DA, Wise CA, Mueller J, Welcher AA, Snipes GJ, Shooter EM, Patel PI, Lupski JR. 1993. Charcot-Marie-Tooth disease type 1A. Association with a spontaneous point mutation in the PMP22 gene. *N Engl J Med* 329:96–101.
- Rovelet-Lecrux A, Hannequin D, Raux G, Le Meur N, Laquerriere A, Vital A, Dumanchin C, Feuillette S, Brice A, Vercelletto M, et al. 2006. APP locus duplication causes autosomal dominant early-onset Alzheimer disease with cerebral amyloid angiopathy. *Nat Genet* 38:24–26.
- Saini N, Ramakrishnan S, Elango R, Ayyar S, Zhang Y, Deem A, Ira G, Haber JE, Lobachev KS, Malkova A. 2013. Migrating bubble during break-induced replication drives conservative DNA synthesis. *Nature* 502:389–392.
- Sakofsky CJ, Roberts SA, Malc E, Mieczkowski PA, Resnick MA, Gordenin DA, Malkova A. 2014. Break-induced replication is a source of mutation clusters underlying kataegis. *Cell Rep* 7:1640–1648.
- Schuster SC, Miller W, Ratan A, Tomsho LP, Giardine B, Kasson LR, Harris RS, Petersen DC, Zhao F, Qi J, et al. 2010. Complete Khoisan and Bantu genomes from southern Africa. *Nature* 463:943–947.
- Sebat J, Lakshmi B, Troge J, Alexander J, Young J, Lundin P, Maner S, Massa H, Walker M, Chi M, et al. 2004. Large-scale copy number polymorphism in the human genome. *Science* 305:525–528.
- Sharp AJ, Hansen S, Selzer RR, Cheng Z, Regan R, Hurst JA, Stewart H, Price SM, Blair E, Hennekam RC, et al. 2006. Discovery of previously unidentified genomic disorders from the duplication architecture of the human genome. *Nat Genet* 38:1038–1042.
- Shinawi M, Liu P, Kang SH, Shen J, Belmont JW, Scott DA, Probst FJ, Craigen WJ, Graham BH, Pursley A, et al. 2010. Recurrent reciprocal 16p11.2 rearrangements associated with global developmental delay, behavioural problems, dysmorphism, epilepsy, and abnormal head size. *J Med Genet* 47:332–341.
- Shinohara M, Shinohara A. 2013. Multiple pathways suppress non-allelic homologous recombination during meiosis in *Saccharomyces cerevisiae*. *PLoS One* 8:e63144.
- Stankiewicz P, Lupski JR. 2002. Genome architecture, rearrangements and genomic disorders. *Trends Genet* 18:74–82.
- Stankiewicz P, Lupski JR. 2010. Structural variation in the human genome and its role in disease. *Annu Rev Med* 61:437–455.
- Stefansson H, Rujescu D, Cichon S, Pietilainen OP, Ingason A, Steinberg S, Fossdal R, Sigurdsson E, Sigmundsson T, Buizer-Voskamp JE, et al. 2008. Large recurrent microdeletions associated with schizophrenia. *Nature* 455:232–236.
- Stephens PJ, Greenman CD, Fu B, Yang F, Bignell GR, Mudie LJ, Pleasance ED, Lau KW, Beare D, Stebbings LA, et al. 2011. Massive genomic rearrangement acquired in a single catastrophic event during cancer development. *Cell* 144:27–40.
- Tanzi RE, Bird ED, Latt SA, Neve RL. 1987. The amyloid beta protein gene is not duplicated in brains from patients with Alzheimer's disease. *Science* 238:666–669.
- The Deciphering Developmental Disorders S. 2014. Large-scale discovery of novel genetic causes of developmental disorders. *Nature* doi: 10.1038/nature14135.
- Timmerman V, Rautenstrauss B, Reiter LT, Koeuth T, Lofgren A, Liehr T, Nelis E, Bathke KD, De Jonghe P, Grehl H, et al. 1997. Detection of the CMT1A/HNPP recombination hotspot in unrelated patients of European descent. *J Med Genet* 34:43–49.
- Treadwell-Deering DE, Powell MP, Potocki L. 2010. Cognitive and behavioral characterization of the Potocki-Lupski syndrome (duplication 17p11.2). *J Dev Behav Pediatr* 31:137–143.
- Trivellini G, Daly AF, Fautz FR, Yuan B, Rostomyan L, Larco DO, Schemthaner-Reiter MH, Szarek E, Leal LF, Caberg JH, et al. 2014. Gigantism and acromegaly due to Xq26 microduplications and GPR101 mutation. *N Engl J Med* 371:2363–2374.
- Turner DJ, Miretti M, Rajan D, Fiegler H, Carter NP, Blayney ML, Beck S, Hurles ME. 2008. Germline rates of de novo meiotic deletions and duplications causing several genomic disorders. *Nat Genet* 40:90–95.
- Walz K, Caratini-Rivera S, Bi W, Fonseca P, Mansouri DL, Lynch J, Vogel H, Noebels JL, Bradley A, Lupski JR. 2003. Modeling del(17)(p11.2p11.2) and dup(17)(p11.2p11.2) contiguous gene syndromes by chromosome engineering in mice: Phenotypic consequences of gene dosage imbalance. *Mol Cell Biol* 23:3646–3655.
- Walz K, Paylor R, Yan J, Bi W, Lupski JR. 2006. Rai1 duplication causes physical and behavioral phenotypes in a mouse model of dup(17)(p11.2p11.2). *J Clin Invest* 116:3035–3041.
- Weiss LA, Shen Y, Korn JM, Arking DE, Miller DT, Fossdal R, Saemundsen E, Stefansson H, Ferreira MA, Green T, et al. 2008. Association between microdeletion and microduplication at 16p11.2 and autism. *N Engl J Med* 358:667–675.
- Wheeler DA, Srinivasan M, Egholm M, Shen Y, Chen L, McGuire A, He W, Chen YJ, Makhijani V, Roth GT, et al. 2008. The complete genome of an individual by massively parallel DNA sequencing. *Nature* 452:872–876.
- Wilson MA, Kwon Y, Xu Y, Chung WH, Chi P, Niu H, Mayle R, Chen X, Malkova A, Sung P. 2013. Pif1 helicase and Poldelta promote recombination-coupled DNA synthesis via bubble migration. *Nature* 502:393–396.
- Wiszniewska J, Bi W, Shaw C, Stankiewicz P, Kang SH, Pursley AN, Lalani S, Hixson P, Gambin T, Tsai CH, et al. 2014. Combined array CGH plus SNP genome analyses in a single assay for optimized clinical testing. *Eur J Hum Genet* 22:79–87.
- Wright CF, Fitzgerald TW, Jones WD, Clayton S, McRae JF, van Kogelenberg M, King DA, Ambridge K, Barrett DM, Bayzina T, et al. 2015. Genetic diagnosis of developmental disorders in the DDD study: A scalable analysis of genome-wide research data. *Lancet*. pii: S0140-6736(14)61705-0. doi: 10.1016/S0140-6736(14)61705-0. [Epub ahead of print].
- Wu N, Ming X, Xiao J, Wu Z, Chen X, Shinawi M, Shen Y, Yu G, Liu J, Xie H, et al. 2015. TBX6 null variants and a common hypomorphic allele in congenital scoliosis. *N Engl J Med* 372:341–350.
- Yang Y, Muzny DM, Reid JG, Bainbridge MN, Willis A, Ward PA, Braxton A, Beuten J, Xia F, Niu Z, et al. 2013. Clinical whole-exome sequencing for the diagnosis of mendelian disorders. *N Engl J Med* 369:1502–1511.
- Yang Y, Muzny DM, Xia F, Niu Z, Person R, Ding Y, Ward P, Braxton A, Wang M, Buhay C, et al. 2014. Molecular findings among

- patients referred for clinical whole-exome sequencing. *JAMA* 312:1870–1879.
- Yatsenko SA, Hixson P, Roney EK, Scott DA, Schaaf CP, Ng YT, Palmer R, Fisher RB, Patel A, Cheung SW, Lupski JR. 2012. Human subtelomeric copy number gains suggest a DNA replication mechanism for formation: beyond breakage-fusion-bridge for telomere stabilization. *Hum Genet* 131:1895–1910.
- Yauk CL, Lucas Argueso J, Auerbach SS, Awadalla P, Davis SR, Demarini DM, Douglas GR, Dubrova YE, Elespuru RK, Glover TW, et al. 2013. Harnessing genomics to identify environmental determinants of heritable disease. *Mutat Res* 752:6–9.
- Yauk CL, Aardema M, van Benthem J, Bishop JB, DeMarini DM, Dubrova YE, Honma M, Lupski JR, Marchetti F, Meistrich ML, et al. 2015. Approaches for identifying germ cell mutagens: Report of the 2013 IEWGT workshop on germ cell assays. *Mutat Res: Genet Toxicol Environ Genet Toxicol*, doi:10.1016/j.mrgentox.2015.01.008.
- Zeleny C. 1921. The direction and frequency of mutation in the bar-eye series of multiple allelomorphs of *Drosophila*. *J Exp Zool* 34: 202–233.
- Zhang F, Khajavi M, Connolly AM, Towne CF, Batish SD, Lupski JR. 2009. The DNA replication FoSTeS/MMBIR mechanism can generate genomic, genic and exonic complex rearrangements in humans. *Nat Genet* 41:849–853.
- Zhang F, Potocki L, Sampson JB, Liu P, Sanchez-Valle A, Robbins-Furman P, Navarro AD, Wheeler PG, Spence JE, Brasington CK, et al. 2010. Identification of uncommon recurrent Potocki-Lupski syndrome-associated duplications and the distribution of rearrangement types and mechanisms in PTLs. *Am J Hum Genet* 86: 462–470.